

2 Watt RF Termination 75 Ohm BNC Female, DC to 2 GHz with Chain



SMTR6255C

Features

- DC to 2 GHz Frequency Range
- 75 Ohm Impedance
- VSWR 1.2:1 Max
- Max Power 2 Watts (CW)
- BNC Female Coaxial Interface
- Includes Beaded Chain

Applications

- Wireless
- Video Signal Transmission
- Radar Systems
- Test and Measurement
- Commercial and Military Communication
- Avionics

Description

ShowMeCables's SMTR6255C is an RF termination (also called RF load or dummy load) that operates from DC to 2 GHz and handles up to 2 Watt (CW). Our BNC termination / load has a female gender. SMTR6255C BNC load termination offers 1.2:1 max VSWR. RF load / terminations are indispensable components in many RF, microwave and millimeter wave systems where signal reflection from unused ports can potentially damage the device or reduce the signal integrity. By using a terminator on an unused port with a matched load (dummy load), the incident energy will be absorbed with minimal reflection. These termination components are commonly used to terminate devices such as couplers, circulators, and switches. They are also widely used in measurement systems to ensure accurate results. ShowMeCables offers a huge selection of RF, microwave and millimeter wave terminations up to 18 GHz with excellent performance over the entire operating range.

Electrical Specifications

Description	Minimum	Typical	Maximum	Units
Frequency Range	DC		2	GHz
Impedance		75		Ohms
VSWR, Input			1.2:1	
Input Power (CW)			2	Watts

Mechanical Specifications

Size

Length	1.28 in [32.51 mm]
Width	0.43 in [10.92 mm]
Weight	0.033 lbs [14.97 g]
Package Type	Connectorized

Configuration

Connector	BNC Female
Connector Specification	MIL-STD-348

Material Specifications

Description	Material	Plating
Insulation	Teflon	
Connector 1 Body	Brass	Tri-Metal
Housing	Brass	Tri-Metal

2 Watt RF Termination 75 Ohm BNC
Female, DC to 2 GHz with Chain



SMTR6255C

Material Specifications

Description	Material	Plating
Chain	Brass	Nickel

Environmental Specifications

Temperature

Compliance Certifications (see [product page](#) for current document)

Plotted and Other Data

Notes:

FPO Show Me Cables specializes in protection of highly sensitive, low voltage equipment through its patented, non-degrading silicon diode technology and custom filters. Our power quality expertise translates into a diverse product offering including AC, DC, and signal applications as well as integrated cabinets, power distribution panels and EMP hardened devices.

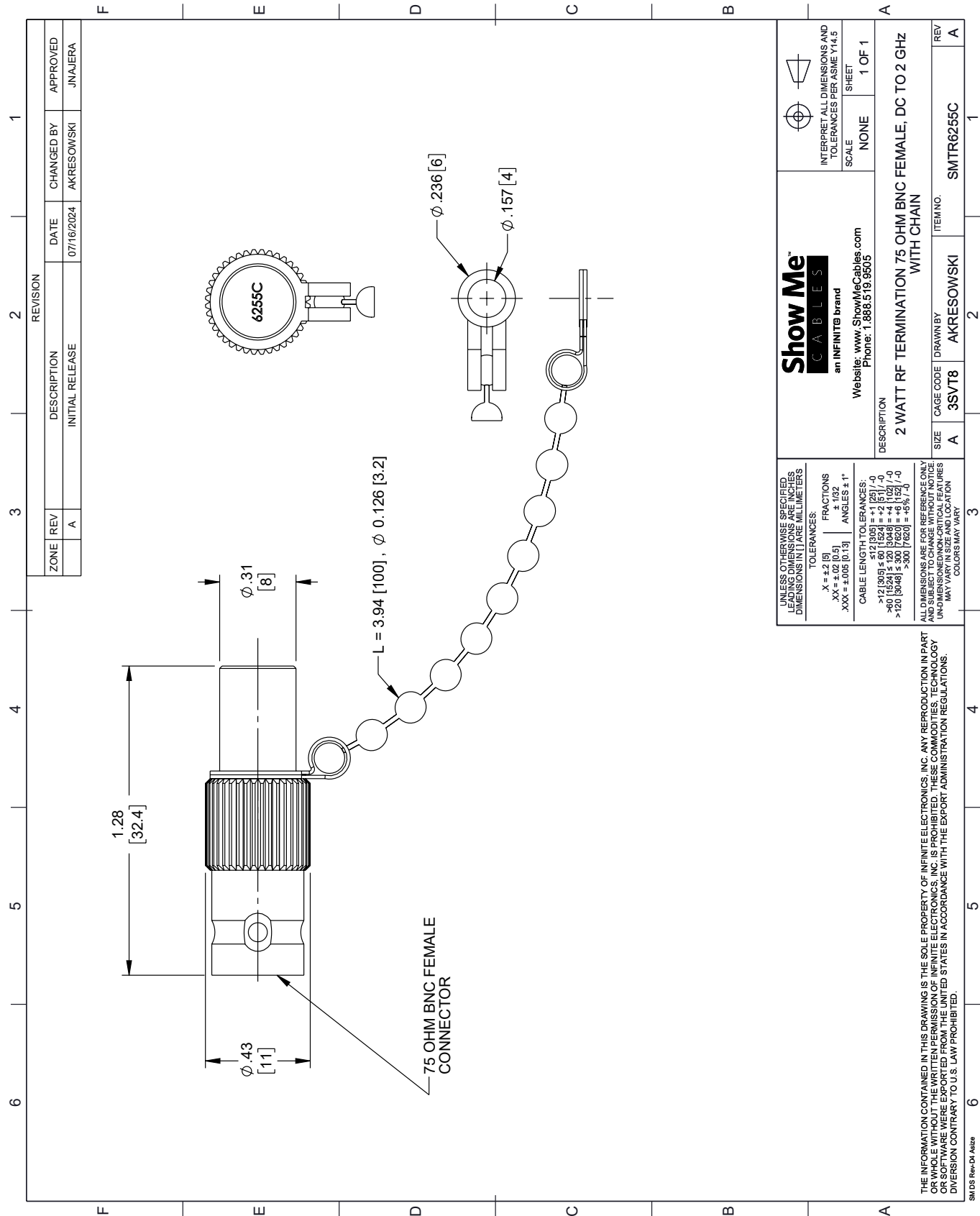
FPO Click the following link (or enter part number in "SEARCH" on website) to obtain additional part information including price, inventory and certifications: [2 Watt RF Termination 75 Ohm BNC Female, DC to 2 GHz with Chain SMTR6255C](#)

URL: <https://www.showmecables.com/showmecables-2-watt-75ohm-bnc-plug-termination-with-chain-2ghz-vswr-12-p.aspx>

FPO The information contained within this document is accurate to the best of our knowledge and representative of the part described herein. It may be necessary to make modifications to the part and/or the documentation of the part in order to implement improvements. Show Me Cables reserves the right to make such changes as required. Unless otherwise stated, all specifications are nominal. Show Me Cables does not make any representation or warranty regarding the suitability of the part described herein for any particular purpose, and Show Me Cables does not assume liability arising out of the use of any part or document.

SMTR6255C CAD Drawing

2 Watt RF Termination 75 Ohm BNC Female, DC to 2 GHz with Chain



UNLESS OTHERWISE SPECIFIED, ALL DIMENSIONS ARE IN INCHES. DIMENSIONS IN [] ARE IN MILLIMETERS.		Show Me [™] CABLES an INFINITE brand		INTERPRET ALL DIMENSIONS AND TOLERANCES PER ASME Y14.5	
TOLERANCES:		Website: www.ShowMeCables.com Phone: 1.888.519.9505		SCALE: NONE	
X = $\pm .05$		FRACTIONS $\pm 1/32$		SHEET 1 OF 1	
XX = $\pm .02$ [0.5]		ANGLES $\pm 1^\circ$			
XXX = $\pm .005$ [0.13]					
CABLE LENGTH TOLERANCES:		DESCRIPTION			
>12 [305] $\pm .60$ [1524] = $\pm .25$ [635] / -0		2 WATT RF TERMINATION 75 OHM BNC FEMALE, DC TO 2 GHz			
>60 [1524] $\pm .120$ [3048] = $\pm .41$ [1029] / -0		WITH CHAIN			
>120 [3048] $\pm .300$ [7620] = $\pm .95$ [2413] / -0					
ALL DIMENSIONS ARE FOR REFERENCE ONLY. DIMENSIONS SHALL BE AS SHOWN ON THE DRAWING. UNLESS OTHERWISE SPECIFIED, DIMENSIONS SHALL BE IN INCHES. DIMENSIONS IN [] ARE IN MILLIMETERS. UNLESS OTHERWISE SPECIFIED, DIMENSIONS SHALL BE IN INCHES. DIMENSIONS IN [] ARE IN MILLIMETERS. UNLESS OTHERWISE SPECIFIED, DIMENSIONS SHALL BE IN INCHES. DIMENSIONS IN [] ARE IN MILLIMETERS.		ITEM NO. SMTR6255C			
UNLESS OTHERWISE SPECIFIED, DIMENSIONS SHALL BE IN INCHES. DIMENSIONS IN [] ARE IN MILLIMETERS. UNLESS OTHERWISE SPECIFIED, DIMENSIONS SHALL BE IN INCHES. DIMENSIONS IN [] ARE IN MILLIMETERS. UNLESS OTHERWISE SPECIFIED, DIMENSIONS SHALL BE IN INCHES. DIMENSIONS IN [] ARE IN MILLIMETERS.		DRAWN BY AKRESOWSKI			
UNLESS OTHERWISE SPECIFIED, DIMENSIONS SHALL BE IN INCHES. DIMENSIONS IN [] ARE IN MILLIMETERS. UNLESS OTHERWISE SPECIFIED, DIMENSIONS SHALL BE IN INCHES. DIMENSIONS IN [] ARE IN MILLIMETERS. UNLESS OTHERWISE SPECIFIED, DIMENSIONS SHALL BE IN INCHES. DIMENSIONS IN [] ARE IN MILLIMETERS.		CAGE CODE 3SVT8			
UNLESS OTHERWISE SPECIFIED, DIMENSIONS SHALL BE IN INCHES. DIMENSIONS IN [] ARE IN MILLIMETERS. UNLESS OTHERWISE SPECIFIED, DIMENSIONS SHALL BE IN INCHES. DIMENSIONS IN [] ARE IN MILLIMETERS. UNLESS OTHERWISE SPECIFIED, DIMENSIONS SHALL BE IN INCHES. DIMENSIONS IN [] ARE IN MILLIMETERS.		SIZE A			
UNLESS OTHERWISE SPECIFIED, DIMENSIONS SHALL BE IN INCHES. DIMENSIONS IN [] ARE IN MILLIMETERS. UNLESS OTHERWISE SPECIFIED, DIMENSIONS SHALL BE IN INCHES. DIMENSIONS IN [] ARE IN MILLIMETERS. UNLESS OTHERWISE SPECIFIED, DIMENSIONS SHALL BE IN INCHES. DIMENSIONS IN [] ARE IN MILLIMETERS.		REV A			

THE INFORMATION CONTAINED IN THIS DRAWING IS THE SOLE PROPERTY OF INFINITE ELECTRONICS, INC. ANY REPRODUCTION IN PART OR WHOLE WITHOUT THE WRITTEN PERMISSION OF INFINITE ELECTRONICS, INC. IS PROHIBITED. THESE COMMODITIES, TECHNOLOGY OR SOFTWARE WERE EXPORTED FROM THE UNITED STATES IN ACCORDANCE WITH THE EXPORT ADMINISTRATION REGULATIONS. DIVISION CONTRARY TO U.S. LAW PROHIBITED.

SM DS Rev-DI A122