

### 2 Watt RF Termination TNC Female, DC to 12 GHz, Brass Body



## SMTR1148

#### Features

- DC to 12 GHz Frequency Range
- 50 Ohm Impedance
- TNC Female Coaxial Interface
- Max VSWR 1.2:1
- Max Power 2 Watts (CW)

#### Applications

- WIFI 6E
- 5G Cellular bands
- SatCom
- Radar Systems
- Test and Measurement
- Commercial and Military Communication

#### Description

ShowMeCables' SMTR1148 is an RF termination (also called RF load or dummy load) that operates from DC to 12 GHz and handles up to 2 Watt (CW). Our TNC termination / load has a female gender. SMTR1148 TNC load termination offers 1.2:1 max VSWR.

RF load / terminations are indispensable components in many RF, microwave and millimeter wave systems where signal reflection from unused ports can potentially damage the device or reduce the signal integrity. By using a terminator on an unused port with a matched load (dummy load), the incident energy will be absorbed with minimal reflection. These termination components are commonly used to terminate devices such as couplers, circulators, and switches. They are also widely used in measurement systems to ensure accurate results. L-com offers a huge selection of RF, microwave and millimeter wave terminations up to 65 GHz with excellent performance over the entire operating range and power handling capabilities up to 800 Watt (CW).

#### Electrical Specifications

| Description                          | Minimum | Typical | Maximum | Units |
|--------------------------------------|---------|---------|---------|-------|
| Frequency Range                      | DC      |         | 12      | GHz   |
| Impedance                            |         | 50      |         | Ohms  |
| VSWR, Input                          |         |         | 1.2:1   |       |
| Input Power (CW)                     |         |         | 2       | Watts |
| Derated linearly to 1W at +165°C     |         |         |         |       |
| Dielectric Withstanding Voltage (DC) |         |         | 1,500   | Vdc   |
| Operating Voltage (DC)               |         |         | 500     | Vdc   |

#### Mechanical Specifications

##### Size

|              |                     |
|--------------|---------------------|
| Length       | 0.902 in [22.91 mm] |
| Width        | 0.433 in [11 mm]    |
| Height       | 0.433 in [11 mm]    |
| Weight       | 0.025 lbs [11.34 g] |
| Package Type | Connectorized       |

##### Configuration

|           |            |
|-----------|------------|
| Connector | TNC Female |
|-----------|------------|

2 Watt RF Termination TNC Female,  
DC to 12 GHz, Brass Body



### SMTR1148

#### Material Specifications

| Description         | Material        | Plating               |
|---------------------|-----------------|-----------------------|
| Connector 1 Contact | Phosphor Bronze | Gold                  |
| Insulation          | Teflon          |                       |
| Connector 1 Body    | Brass           | Copper-Tin-Zinc Alloy |

#### Environmental Specifications

##### Temperature

Operating Range

-55 to +165 deg C

Humidity

MIL-STD-202, Method 106

Thermal Shock

MIL-STD-202, Method 107, Condition B

Salt Spray

MIL-STD-202, Method 101, Condition B

**Compliance Certifications** (see [product page](#) for current document)

#### Plotted and Other Data

Notes:

**FPO** Show Me Cables specializes in protection of highly sensitive, low voltage equipment through its patented, non-degrading silicon diode technology and custom filters. Our power quality expertise translates into a diverse product offering including AC, DC, and signal applications as well as integrated cabinets, power distribution panels and EMP hardened devices.

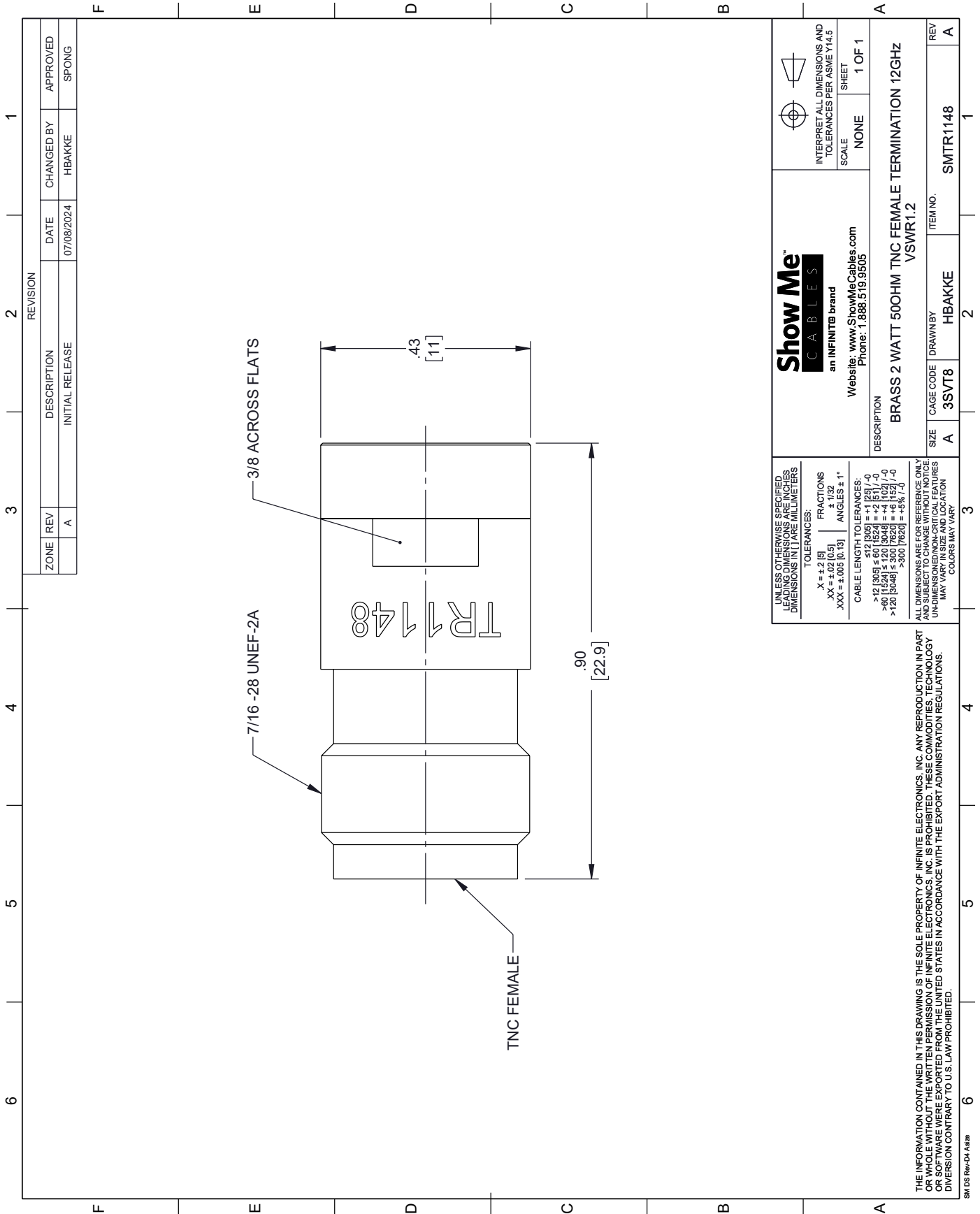
**FPO** Click the following link (or enter part number in "SEARCH" on website) to obtain additional part information including price, inventory and certifications: [2 Watt RF Termination TNC Female, DC to 12 GHz, Brass Body SMTR1148](#)

**URL:** <https://www.showmecables.com/showmecables-brass-2-watt-50ohm-tnc-jack-termination-12ghz-vswr12-p.aspx>



**FPO** The information contained within this document is accurate to the best of our knowledge and representative of the part described herein. It may be necessary to make modifications to the part and/or the documentation of the part in order to implement improvements. Show Me Cables reserves the right to make such changes as required. Unless otherwise stated, all specifications are nominal. Show Me Cables does not make any representation or warranty regarding the suitability of the part described herein for any particular purpose, and Show Me Cables does not assume liability arising out of the use of any part or document.

# SMTR1148 CAD Drawing

2 Watt RF Termination TNC Female, DC to 12 GHz, Brass Body



| ZONE |                 | REVISION   |            | APPROVED |          |
|------|-----------------|------------|------------|----------|----------|
| REV  | DESCRIPTION     | DATE       | CHANGED BY | DATE     | APPROVED |
| A    | INITIAL RELEASE | 07/08/2024 | HBAKKE     |          | SPONG    |

|  |                 |   |
|--|-----------------|---|
|  <p>an INFINITB brand<br/>Website: <a href="http://www.ShowMeCables.com">www.ShowMeCables.com</a><br/>Phone: 1.888.519.9505</p> |                 | <br>INTERPRET ALL DIMENSIONS AND TOLERANCES PER ASME Y14.5<br>SCALE NONE<br>SHEET 1 OF 1 |
| DESCRIPTION<br>BRASS 2 WATT 50OHM TNC FEMALE TERMINATION 12GHz VSWR1.2   |                 |   |
| SIZE A   | CAGE CODE 3SVT8 | ITEM NO. SMTR1148   |
| DRAWN BY HBAKKE  |                 | REV A   |

UNLESS OTHERWISE SPECIFIED, LEADING DIMENSIONS ARE IN INCHES, DIMENSIONS IN PAREMETERS

TOLERANCES:  
 .X = ±.2 [5] FRACTIONS ± 1/32  
 .XX = ±.02 [0.5] ANGLES ± 1°  
 .XXX = ±.005 [0.13]

CABLE LENGTH TOLERANCES:  
 >12 [305] ≤ 60 [1524] = +.1 [25] / -0  
 >60 [1524] ≤ 120 [3048] = +.4 [102] / -0  
 >120 [3048] ≤ 300 [7620] = +.8 [203] / -0

ALL DIMENSIONS ARE FOR REFERENCE ONLY. DIMENSIONS ON CRITICAL FEATURES MAY VARY IN SIZE AND LOCATION. COLORS MAY VARY.

THE INFORMATION CONTAINED IN THIS DRAWING IS THE SOLE PROPERTY OF INFINITE ELECTRONICS, INC. ANY REPRODUCTION IN PART OR WHOLE WITHOUT THE WRITTEN PERMISSION OF INFINITE ELECTRONICS, INC. IS PROHIBITED. THESE COMMODITIES, TECHNOLOGY OR SOFTWARE WERE EXPORTED FROM THE UNITED STATES IN ACCORDANCE WITH THE EXPORT ADMINISTRATION REGULATIONS. DIVERSION CONTRARY TO U.S. LAW PROHIBITED.

SM DS Rev-04 A/B2