

Diplexer, 5 to 1000 MHz Data Band, 54 to 1000 MHz TV Band, 75 Ohm Type F Female



SMDP1008

Features

- Frequency range from 5 to 1000 MHz
- High pass band: 54 to 1000 MHz
- Low pass band: 5 to 1000 MHz
- Max insertion loss 6 dB
- 75ohm impedance
- Max VSWR 1.58:1

Applications

- Cable TV/Internet
- Signal Splitting
- Broadcast TV
- MSO

Description

SMDP1008 is a RF diplexer with F-type connectors used to split RF signals with different frequencies. The operating frequency range for this diplexer is from 5 to 1000 MHz. The high pass band is from 54 to 1000 MHz and low pass band is from 5 to 1000 MHz. This RF diplexer has great insertion loss of 3.7 dB and minimum return loss of 13 dB with 75 ohm impedance. SMDP1008 is part of a broad RF product portfolio from Pasternack which can be shipped the same day with no MOQ.

Electrical Specifications

Description	Minimum	Typical	Maximum	Units
Impedance		75		Ohms
Common Port				
Frequency	5		1,000	MHz
TV Band				
Passband Frequency	54		1,000	MHz
Return Loss	13	16		dB
Insertion Loss		3.7	6	dB
Rejection Frequency	5		42	MHz
Rejection	50	55		dB
DATA Band				
Passband Frequency	5		42	MHz
Return Loss	13	16		dB
Insertion Loss		1	1.8	dB
Isolation	55	60		dB
Passband Frequency 2	54		1,000	MHz
Return Loss 2	13	16		dB
Insertion Loss 2		3.7	4.5	dB
Isolation 2	15	20		dB

Electrical Specification Notes:
Values at 25°C, sea level.

Mechanical Specifications

Size

Length

2.106 in [53.49 mm]

Diplexer, 5 to 1000 MHz Data Band, 54 to 1000 MHz TV Band, 75 Ohm Type F Female



SMDP1008

Width	1.783 in [45.29 mm]
Height	0.709 in [18.01 mm]
Weight	0.103 lbs [46.72 g]
Body Material	Zinc
Body Plating	Zinc
Finish	Polished

Configuration

Design	Bidirectional
Package Style	Connectorized
Connector 1	F Female
Connector 2	F Female
Connector 3	F Female

Environmental Specifications

Compliance Certifications (see [product page](#) for current document)

Plotted and Other Data

Notes:

- Values at 25°C, sea level.

FPO Show Me Cables specializes in protection of highly sensitive, low voltage equipment through its patented, non-degrading silicon diode technology and custom filters. Our power quality expertise translates into a diverse product offering including AC, DC, and signal applications as well as integrated cabinets, power distribution panels and EMP hardened devices.

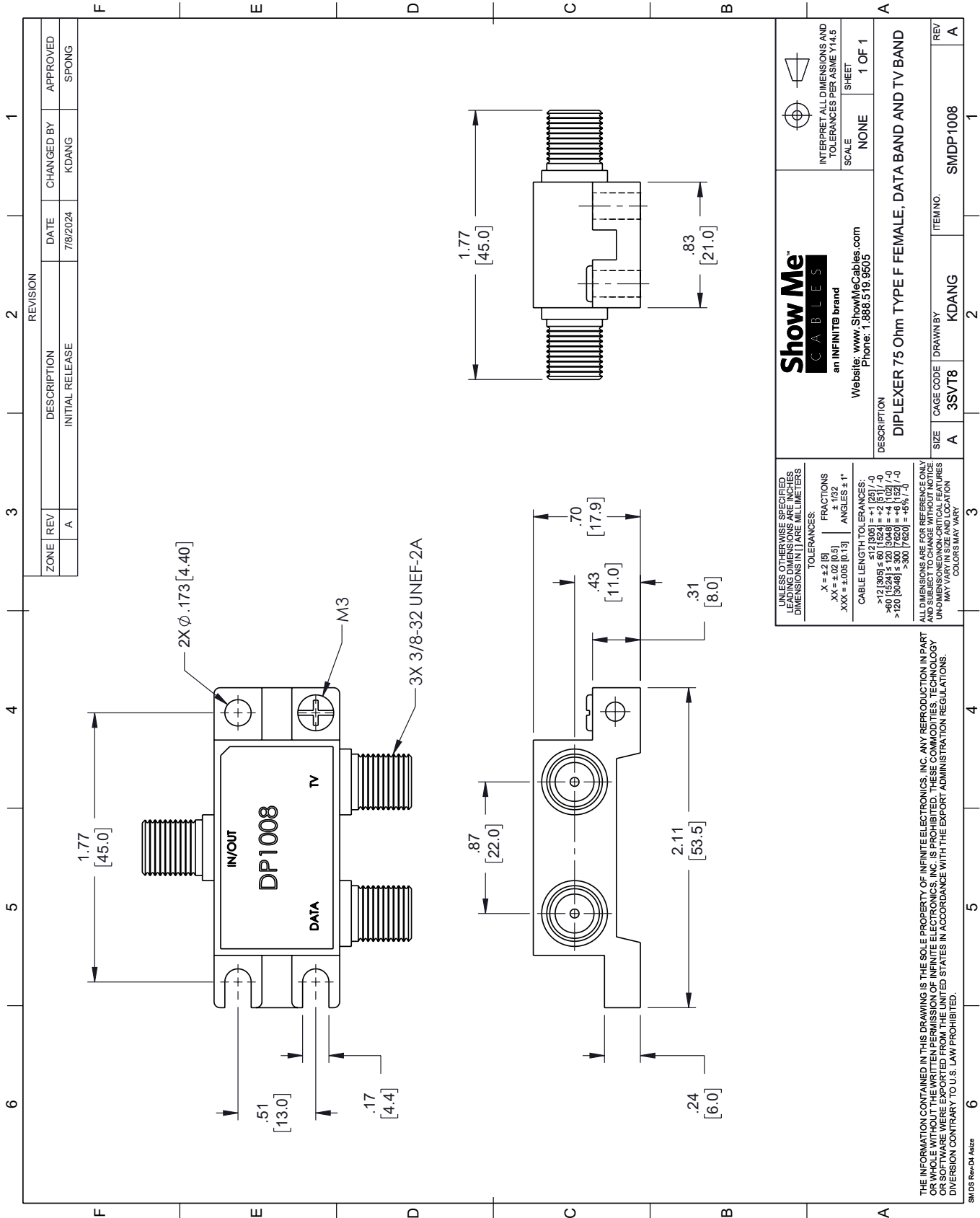
FPO Click the following link (or enter part number in "SEARCH" on website) to obtain additional part information including price, inventory and certifications: [Diplexer, 5 to 1000 MHz Data Band, 54 to 1000 MHz TV Band, 75 Ohm Type F Female SMDP1008](#)

URL: <https://www.showmecables.com/showmecables-diplexer-75-ohm-type-f-female-data-band-and-tv-band-p.aspx>

FPO The information contained within this document is accurate to the best of our knowledge and representative of the part described herein. It may be necessary to make modifications to the part and/or the documentation of the part in order to implement improvements. Show Me Cables reserves the right to make such changes as required. Unless otherwise stated, all specifications are nominal. Show Me Cables does not make any representation or warranty regarding the suitability of the part described herein for any particular purpose, and Show Me Cables does not assume liability arising out of the use of any part or document.

SMDP1008 CAD Drawing

Diplexer, 5 to 1000 MHz Data Band, 54 to 1000 MHz TV Band, 75 Ohm Type F Female



REVISION		DATE	CHANGED BY	APPROVED	
ZONE	REV	DESCRIPTION	DATE	CHANGED BY	APPROVED
	A	INITIAL RELEASE	7/8/2024	KDANG	SPONG

Show Me CABLES
an INFINITE brand
Website: www.ShowMeCables.com
Phone: 1.888.519.9505

UNLESS OTHERWISE SPECIFIED, ALL DIMENSIONS ARE IN INCHES. LEADING DIMENSIONS ARE IN MILLIMETERS.
TOLERANCES:
.X = ±.2 [5]
.XX = ±.02 [0.5]
.XXX = ±.005 [0.13]
FRACTIONS ± 1/32
ANGLES ± 1°
CABLE LENGTH TOLERANCES:
<12 [305] ± .60 [15.24] = ±.2 [5.1] / -0
>12 [305] ≤ 60 [1524] = ±.4 [10.2] / -0
>60 [1524] ≤ 120 [3048] = ±.4 [10.2] / -0
>120 [3048] ≤ 300 [7620] = ±.6 [15.2] / -0
ALL DIMENSIONS ARE FOR REFERENCE ONLY. UNLESS OTHERWISE SPECIFIED, ALL DIMENSIONS ARE IN INCHES. LEADING DIMENSIONS ARE IN MILLIMETERS. COLORS MAY VARY.

DESCRIPTION
DIPLEXER 75 Ohm TYPE F FEMALE, DATA BAND AND TV BAND

SCALE NONE SHEET 1 OF 1

INTERPRET ALL DIMENSIONS AND TOLERANCES PER ASME Y14.5

SIZE	CAGE CODE	DRAWN BY	ITEM NO.
A	3SVT8	KDANG	SMDP1008

THE INFORMATION CONTAINED IN THIS DRAWING IS THE SOLE PROPERTY OF INFINITE ELECTRONICS, INC. ANY REPRODUCTION IN PART OR WHOLE WITHOUT THE WRITTEN PERMISSION OF INFINITE ELECTRONICS, INC. IS PROHIBITED. THESE COMMODITIES, TECHNOLOGY OR SERVICE ARE EXPORTED FROM THE UNITED STATES IN ACCORDANCE WITH THE EXPORT ADMINISTRATION REGULATIONS. DIVERSION CONTRARY TO U.S. LAW PROHIBITED.

SMDS Rev-DI A12e