

Diplexer, 5 to 390 MHz Low Pass, 650 to 1,000 MHz High Pass, 75 Ohm Type F Female



SMDP1001

Features

- Frequency range from 5 to 1000 MHz
- High pass band: 650 to 1000 MHz
- Low pass band: 5 to 390 MHz
- Max insertion loss 2 dB
- 75ohm impedance
- Max VSWR 1.5:1

Applications

- Cable TV/Internet
- Signal Splitting
- Broadcast TV
- MSO

Description

SMDP1001 is a RF diplexer with F-type connectors used to split RF signals with different frequencies. The operating frequency range for this diplexer is from 5 to 1000 MHz. The high pass band is from 650 to 1000 MHz and low pass band is from 5 to 390 MHz. This RF diplexer has great insertion loss of 1 dB and minimum return loss of 14 dB with 75 ohm impedance. SMDP1001 is part of a broad RF product portfolio from Pasternack which can be shipped the same day with no MOQ.

Electrical Specifications

Description	Minimum	Typical	Maximum	Units
Impedance		75		Ohms
Common Port				
Frequency	5		1,000	MHz
Return Loss	14	18		dB
LPF Port				
Passband Frequency	5		390	MHz
Return Loss	14	18		dB
Insertion Loss		1	2	dB
Rejection Frequency	650		1,000	MHz
Rejection	50	55		dB
HPF Port				
Passband Frequency	650		1,000	MHz
Return Loss	14	18		dB
Insertion Loss		1	2	dB
Rejection Frequency	5		390	MHz
Rejection	50	55		dB

Electrical Specification Notes:
Values at 25°C, sea level.

Mechanical Specifications

Size

Length	2.933 in [74.5 mm]
Width	1.299 in [32.99 mm]
Height	0.705 in [17.91 mm]

Diplexer, 5 to 390 MHz Low Pass, 650 to 1,000 MHz High Pass, 75 Ohm Type F Female



SMDP1001

Weight	0.132 lbs [59.87 g]
Body Material	Zinc
Finish	Polished

Configuration

Design	Bidirectional
Package Style	Connectorized
Connector 1	F Female
Connector 2	F Female
Connector 3	F Female

Mechanical Specification Notes:
EN 50083-2 Class A Standard

Environmental Specifications

Compliance Certifications (see [product page](#) for current document)

Plotted and Other Data

Notes:

- Values at 25°C, sea level.

FPO Show Me Cables specializes in protection of highly sensitive, low voltage equipment through its patented, non-degrading silicon diode technology and custom filters. Our power quality expertise translates into a diverse product offering including AC, DC, and signal applications as well as integrated cabinets, power distribution panels and EMP hardened devices.

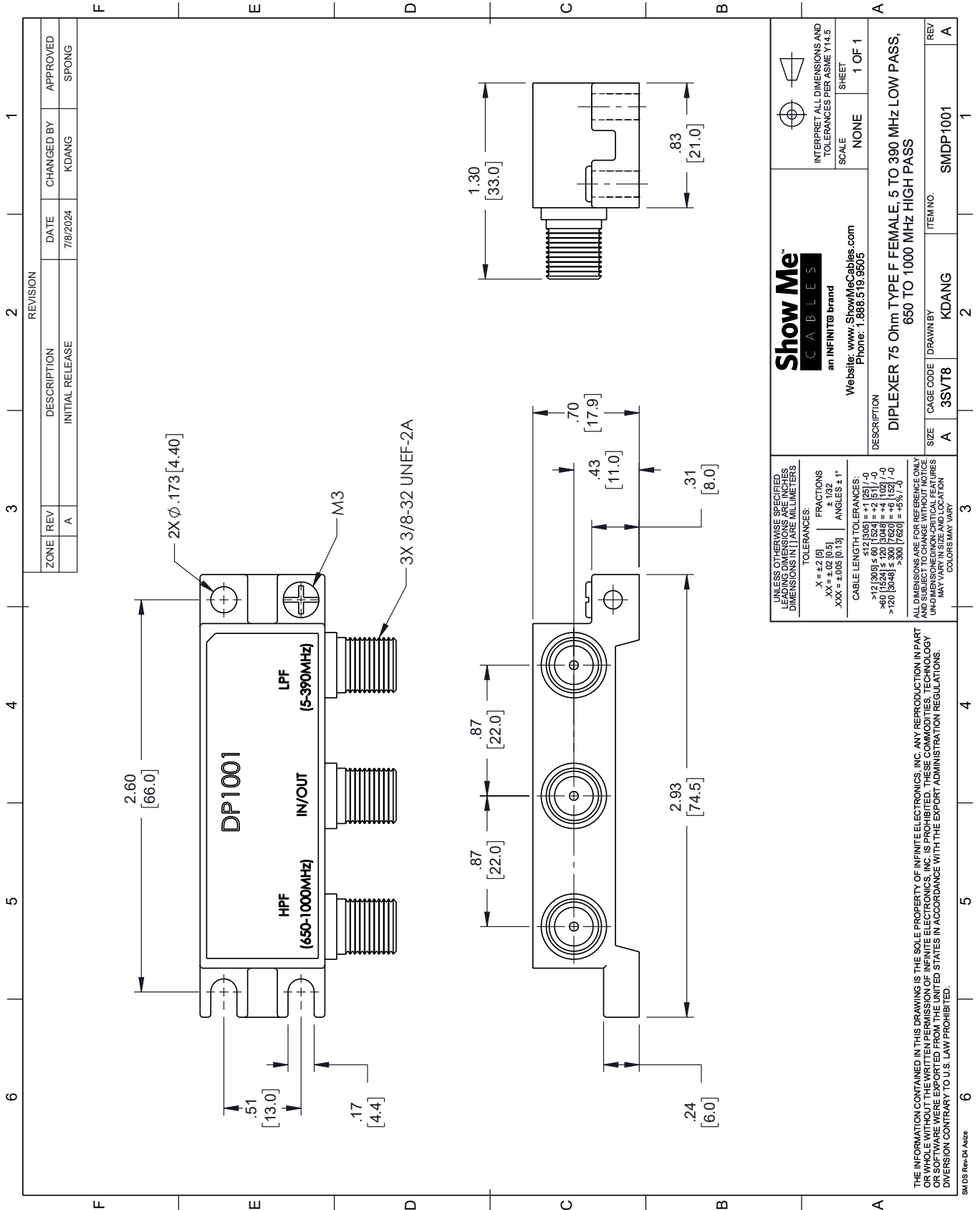
FPO Click the following link (or enter part number in "SEARCH" on website) to obtain additional part information including price, inventory and certifications: [Diplexer, 5 to 390 MHz Low Pass, 650 to 1,000 MHz High Pass, 75 Ohm Type F Female SMDP1001](#)

URL: <https://www.showmecables.com/showmecables-diplexer-75-ohm-type-f-female-5-to-390-mhz-low-pass-650-to-1000-mhz-high-pass-p.aspx>

FPO The information contained within this document is accurate to the best of our knowledge and representative of the part described herein. It may be necessary to make modifications to the part and/or the documentation of the part in order to implement improvements. Show Me Cables reserves the right to make such changes as required. Unless otherwise stated, all specifications are nominal. Show Me Cables does not make any representation or warranty regarding the suitability of the part described herein for any particular purpose, and Show Me Cables does not assume liability arising out of the use of any part or document.

SMDP1001 CAD Drawing

Diplexer, 5 to 390 MHz Low Pass, 650 to 1,000 MHz High Pass, 75 Ohm Type F Female



REVISION		DATE	CHANGED BY	APPROVED	
ZONE	REV	DESCRIPTION	DATE	CHANGED BY	APPROVED
	A	INITIAL RELEASE	7/8/2024	KDANG	SPONG

Show Me CABLES
an INFINITE brand
Website: www.ShowMeCables.com
Phone: 1.888.519.9505

UNLESS OTHERWISE SPECIFIED, LEADING DIMENSIONS ARE IN INCHES AND DIMENSIONS IN [] ARE IN MILLIMETERS.

TOLERANCES:
 .X = ±.2 [5]
 .XX = ±.02 [0.5]
 .XXX = ±.005 [0.13]

FRACTIONS
 ± 1/32
 ANGLES ± 1°

CABLE LENGTH TOLERANCES:
 ≤ 12 [305] ± .60 [15.24] = ± 2 [51] / -0
 > 12 [305] ≤ 60 [1524] = ± 4 [102] / -0
 > 60 [1524] ≤ 120 [3048] = ± 4 [102] / -0
 > 120 [3048] ≤ 300 [7620] = ± 6 [152] / -0
 > 300 [7620] = ± 8 [203] / -0

ALL DIMENSIONS ARE FOR REFERENCE ONLY. UNLESS OTHERWISE SPECIFIED, DIMENSIONS ARE IN INCHES AND DIMENSIONS IN [] ARE IN MILLIMETERS. COLORS MAY VARY.

THE INFORMATION CONTAINED IN THIS DRAWING IS THE SOLE PROPERTY OF INFINITE ELECTRONICS, INC. ANY REPRODUCTION IN PART OR WHOLE WITHOUT THE WRITTEN PERMISSION OF INFINITE ELECTRONICS, INC. IS PROHIBITED. THESE COMMODITIES, TECHNOLOGY OR SOFTWARE ARE EXPORTED FROM THE UNITED STATES IN ACCORDANCE WITH THE EXPORT ADMINISTRATION REGULATIONS. DIVISION CONTRARY TO U.S. LAW PROHIBITED.

SCALE: NONE SHEET: 1 OF 1

INTERPRET ALL DIMENSIONS AND TOLERANCES PER ASME Y14.5

DESCRIPTION	SIZE	CAGE CODE	DRAWN BY	ITEM NO.
DIPLEXER 75 Ohm TYPE F FEMALE; 5 TO 390 MHz LOW PASS, 650 TO 1000 MHz HIGH PASS	A	3SVT8	KDANG	SMDP1001