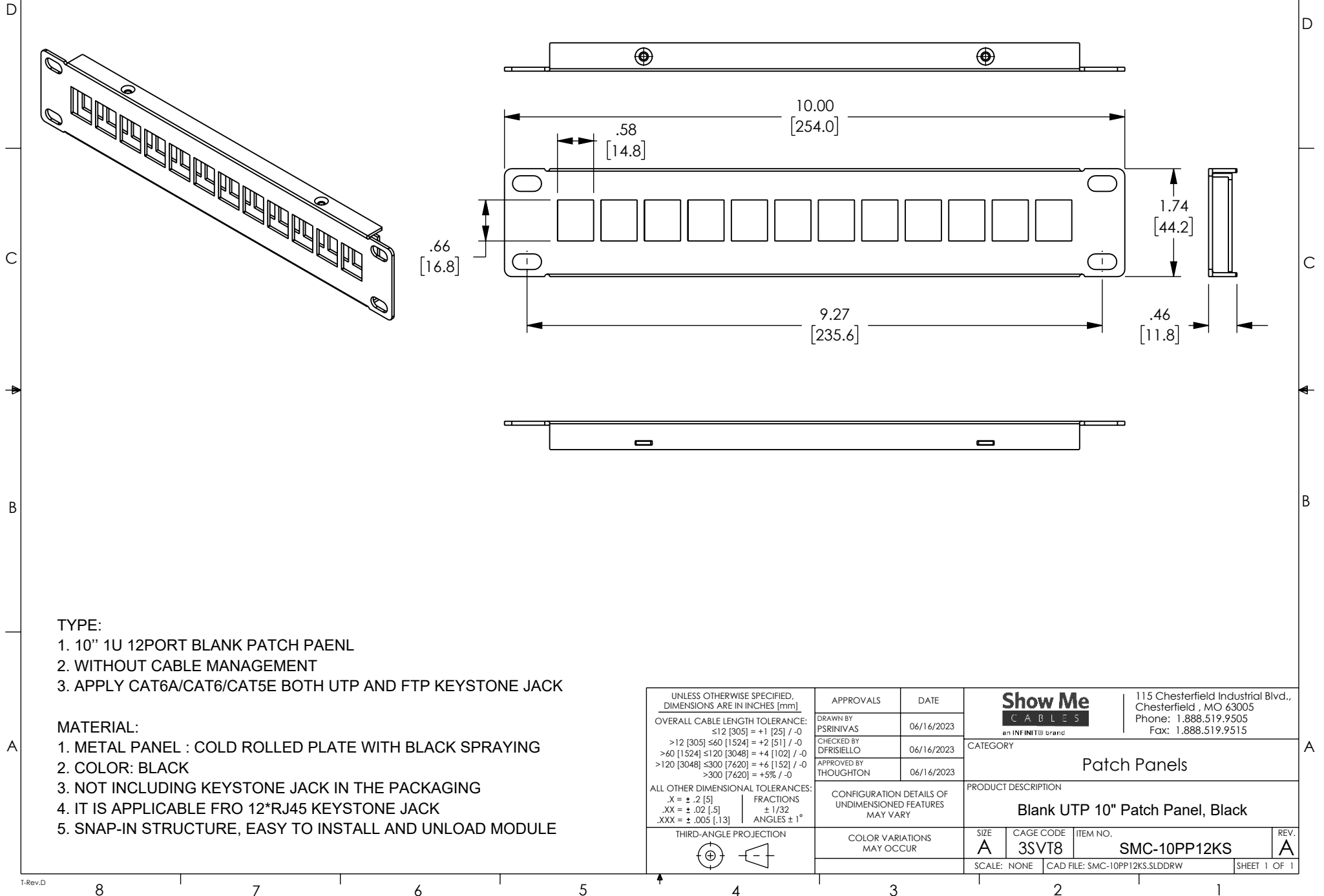


THE INFORMATION CONTAINED IN THIS DRAWING IS THE SOLE PROPERTY OF SHOW ME CABLES, INC. ANY REPRODUCTION IN PART OR WHOLE WITHOUT THE WRITTEN PERMISSION OF SHOW ME CABLES, INC. IS PROHIBITED.

| REVISIONS | | | |
|-----------|-----------------|------------|-----------|
| REV | DESCRIPTION | DATE | APPROVED |
| | INITIAL RELEASE | 06/16/2023 | THOUGHTON |
| | | | |
| | | | |
| | | | |




TYPE:

- 10" 1U 12PORT BLANK PATCH PAENL
- WITHOUT CABLE MANAGEMENT
- APPLY CAT6A/CAT6/CAT5E BOTH UTP AND FTP KEYSTONE JACK

MATERIAL:

- METAL PANEL : COLD ROLLED PLATE WITH BLACK SPRAYING
- COLOR: BLACK
- NOT INCLUDING KEYSTONE JACK IN THE PACKAGING
- IT IS APPLICABLE FRO 12*RJ45 KEYSTONE JACK
- SNAP-IN STRUCTURE, EASY TO INSTALL AND UNLOAD MODULE

| | | | | | |
|--|--------------------------|---|---|------------------------------|--------------|
| UNLESS OTHERWISE SPECIFIED, DIMENSIONS ARE IN INCHES [mm] OVERALL CABLE LENGTH TOLERANCE: ≤12 [305] = +1 [25] / -0 >12 [305] ≤60 [1524] = +2 [51] / -0 >60 [1524] ≤120 [3048] = +4 [102] / -0 >120 [3048] ≤300 [7620] = +6 [152] / -0 >300 [7620] = +5% / -0 ALL OTHER DIMENSIONAL TOLERANCES: .X = ± .2 [5] FRACTIONS ± 1/32 .XX = ± .02 [.5] ANGLES ± 1° .XXX = ± .005 [.13] THIRD-ANGLE PROJECTION  | APPROVALS | DATE | <div>Show Me CABLES an INFINITI® brand</div> <div>115 Chesterfield Industrial Blvd., Chesterfield, MO 63005 Phone: 1.888.519.9505 Fax: 1.888.519.9515</div> | | |
| | DRAWN BY PSRINIVAS | 06/16/2023 | | CATEGORY Patch Panels | |
| | CHECKED BY DFRISIELLO | 06/16/2023 | | | |
| | APPROVED BY THOUGHTON | 06/16/2023 | | | |
| CONFIGURATION DETAILS OF UNDIMENSIONED FEATURES MAY VARY | | PRODUCT DESCRIPTION Blank UTP 10" Patch Panel, Black | | | |
| COLOR VARIATIONS MAY OCCUR | | SIZE A | CAGE CODE 3SVT8 | ITEM NO. SMC-10PP12KS | REV. A |
| | | SCALE: NONE CAD FILE: SMC-10PP12KS.SLDDRW | | | SHEET 1 OF 1 |