

8 dB Fixed Attenuator DC to 4 GHz, BNC Male to BNC Female Brass Tri-Metal Body Rated Up to 2 Watt



SMAT7437-8

Features

- DC to 4 GHz Frequency Range
- Attenuation 8 dB Typical
- Max Power 2 Watts (CW)
- VSWR < 1.25:1
- 50 Ohm Impedance

Applications

- Wireless
- Video Signal Transmission
- Radar Systems
- Test and Measurement
- Commercial and Military Communication
- Avionics

Description

ShowMeCables carries a wide range of fixed attenuators with a broad selection of attenuation levels, frequency ranges, and power dissipation ranges. RF microwave attenuators (also known as RF pads) lower the amplitude of a signal (attenuate) a known amount and can be used in a wide variety of applications. These attenuators pads are used when a signal needs to be reduced to protect measurement equipment or other circuitry, to extend the range of power meters and amplifiers, and to impedance match circuits by reducing the VSWR seen by adjacent components. RF attenuators can prevent signal overload in amplifiers, receivers and detectors, adjusting the signal level to a range that is optimal. Few RF components are as commonly used as fixed coaxial attenuators, and ShowMeCables carries one of the largest in-stock varieties and ships them same day. The 8 dB Fixed Attenuator SMAT7437-8 is rated to 2 Watts and operates from DC to 4 GHz. The versatile coaxial package uses BNC male to BNC female connectors.

Electrical Specifications

| Description | Minimum | Typical | Maximum | Units |
|----------------------|---------|---------|---------|-------|
| Frequency Range | DC | | 4 | GHz |
| Impedance | | 50 | | Ohms |
| Nominal Attenuation | | 8 | | dB |
| Attenuation Accuracy | | 0.5 | | dB |
| VSWR | | | 1.25:1 | |
| Input Power, CW | | | 2 | Watts |

Mechanical Specifications

Size

| | |
|---------------------------|---------------------|
| Length | 2.087 in [53.01 mm] |
| Width/Diameter | 0.571 in [14.5 mm] |
| Height | 0.571 in [14.5 mm] |
| Weight | 0.057 lbs [25.85 g] |
| Body Material and Plating | Brass, Tri-Metal |

Configuration

| | |
|--------|-------|
| Design | Fixed |
|--------|-------|

Connectors

| Description | Connector 1 | Connector 2 |
|-------------|-------------|-------------|
| Type | BNC Male | BNC Female |

8 dB Fixed Attenuator DC to 4 GHz, BNC Male to BNC Female Brass Tri-Metal Body Rated Up to 2 Watt



SMAT7437-8

Connectors

| Description | Connector 1 | Connector 2 |
|-----------------------------------|-----------------------|-----------------------|
| Contact Material and Plating | Phosphor Bronze, Gold | Phosphor Bronze, Gold |
| Coupling Nut Material and Plating | Stainless Steel | |
| Body Material and Plating | Brass, Tri-Metal | Brass, Tri-Metal |

Environmental Specifications

Temperature

Operating Range -55 to +125 deg C

Compliance Certifications (see [product page](#) for current document)

Plotted and Other Data

Notes:

Typical Performance Data

FPO Show Me Cables specializes in protection of highly sensitive, low voltage equipment through its patented, non-degrading silicon diode technology and custom filters. Our power quality expertise translates into a diverse product offering including AC, DC, and signal applications as well as integrated cabinets, power distribution panels and EMP hardened devices.

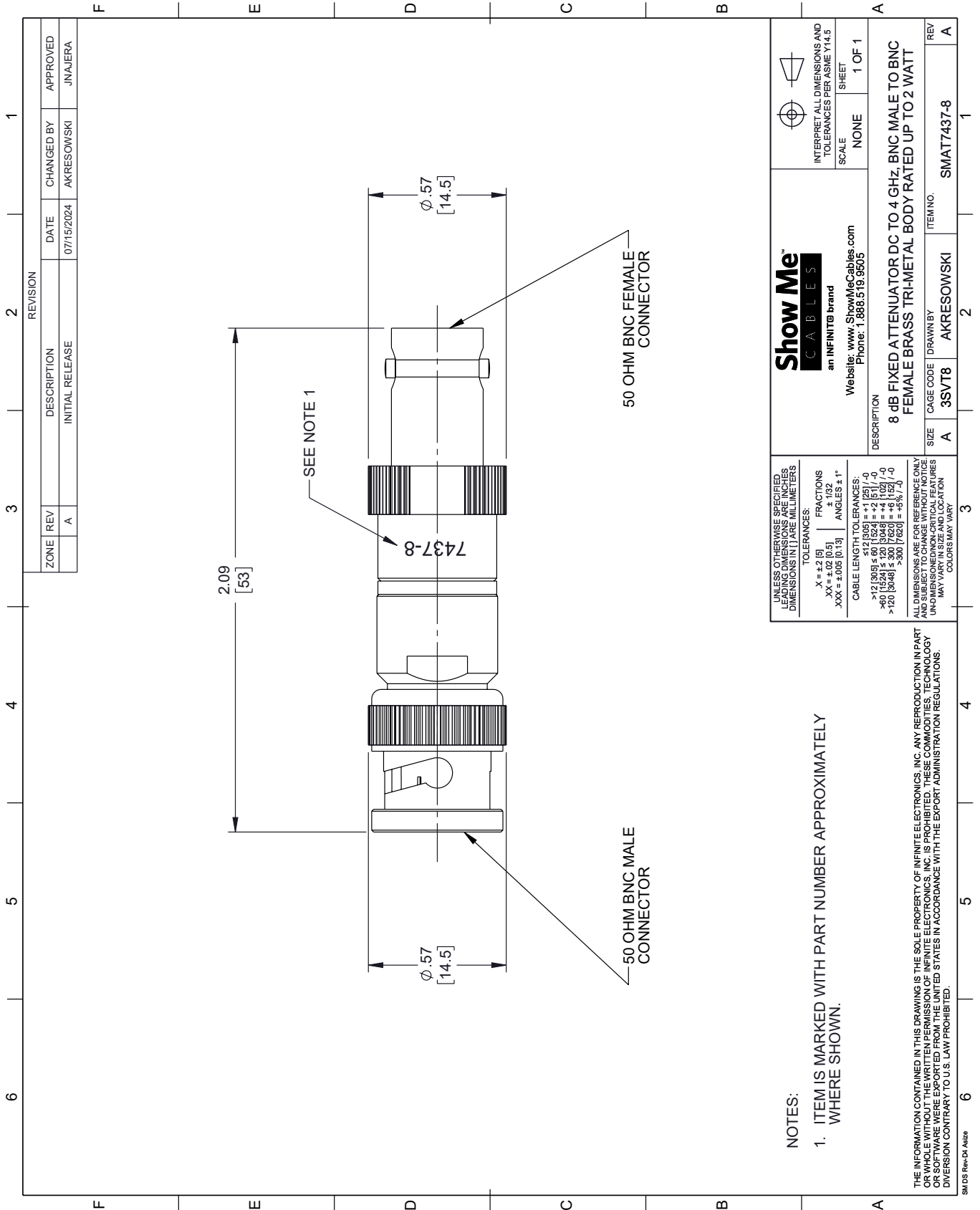
FPO Click the following link (or enter part number in "SEARCH" on website) to obtain additional part information including price, inventory and certifications: [8 dB Fixed Attenuator DC to 4 GHz, BNC Male to BNC Female Brass Tri-Metal Body Rated Up to 2 Watt SMAT7437-8](#)

URL: <https://www.showmecables.com/showmecables-8db-50ohm-fixed-attenuator-bnc-plug-to-bnc-jack-4ghz-rated-2-watt-p.aspx>

FPO The information contained within this document is accurate to the best of our knowledge and representative of the part described herein. It may be necessary to make modifications to the part and/or the documentation of the part in order to impliment improvements. Show Me Cables reserves the right to make such changes as required. Unless otherwise stated, all specifications are nominal. Show Me Cables does not make any representation or warranty regarding the suitability of the part described herein for any particular purpose, and Show Me Cables does not assume liability arising out of the use of any part or document.

SMAT7437-8 CAD Drawing

8 dB Fixed Attenuator DC to 4 GHz, BNC Male to BNC Female Brass Tri-Metal Body Rated Up to 2 Watt



| | | | | | |
|------|-----|-----------------|------------|------------|----------|
| ZONE | REV | DESCRIPTION | DATE | CHANGED BY | APPROVED |
| | A | INITIAL RELEASE | 07/15/2024 | AKRESOWSKI | JNAJERA |

| | | |
|--|--|--|
| UNLESS OTHERWISE SPECIFIED, LEADING DIMENSIONS ARE IN INCHES AND TRAILING DIMENSIONS ARE IN MILLIMETERS | Show Me CABLES an INFINITE brand Website: www.ShowMeCables.com Phone: 1.888.519.9505 | INTERPRET ALL DIMENSIONS AND TOLERANCES PER ASME Y14.5 SCALE: NONE SHEET: 1 OF 1 |
| TOLERANCES: .X = ±.2 (5) .XX = ±.02 (0.5) .XXX = ±.005 (0.13) FRACTIONS: ± 1/32 ANGLES: ± 1° CABLE LENGTH TOLERANCES: < 12 (305) ± .60 (15.24) = ± 2 (51) / -0 > 12 (305) ≤ 60 (1524) = ± 4 (102) / -0 > 60 (1524) ≤ 120 (3048) = ± 4 (102) / -0 > 120 (3048) ≤ 300 (7620) = ± 5 (127) / -0 > 300 (7620) = ± 5 (127) / -0 | | |

| | |
|---|------------|
| DESCRIPTION | ITEM NO. |
| 8 dB FIXED ATTENUATOR DC TO 4 GHz; BNC MALE TO BNC FEMALE BRASS TRI-METAL BODY RATED UP TO 2 WATT | SMAT7437-8 |
| SIZE | REV |
| A | A |

UNLESS OTHERWISE SPECIFIED, LEADING DIMENSIONS ARE IN INCHES AND TRAILING DIMENSIONS ARE IN MILLIMETERS

TOLERANCES:
 .X = ±.2 (5)
 .XX = ±.02 (0.5)
 .XXX = ±.005 (0.13)
 FRACTIONS: ± 1/32
 ANGLES: ± 1°
 CABLE LENGTH TOLERANCES:
 < 12 (305) ± .60 (15.24) = ± 2 (51) / -0
 > 12 (305) ≤ 60 (1524) = ± 4 (102) / -0
 > 60 (1524) ≤ 120 (3048) = ± 4 (102) / -0
 > 120 (3048) ≤ 300 (7620) = ± 5 (127) / -0
 > 300 (7620) = ± 5 (127) / -0

ALL DIMENSIONS ARE FOR REFERENCE ONLY. UNLESS OTHERWISE SPECIFIED, DIMENSIONS AND LOCATIONS MAY VARY IN SIZE AND LOCATION. COLORS MAY VARY.

NOTES:
 1. ITEM IS MARKED WITH PART NUMBER APPROXIMATELY WHERE SHOWN.

THE INFORMATION CONTAINED IN THIS DRAWING IS THE SOLE PROPERTY OF INFINITE ELECTRONICS, INC. ANY REPRODUCTION IN PART OR WHOLE WITHOUT THE WRITTEN PERMISSION OF INFINITE ELECTRONICS, INC. IS PROHIBITED. THESE COMMODITIES, TECHNOLOGY OR SERVICES ARE EXPORTED FROM THE UNITED STATES IN ACCORDANCE WITH THE EXPORT ADMINISTRATION REGULATIONS. DIVERSION CONTRARY TO U.S. LAW PROHIBITED.

SM DS Rev-DI A12z