

## 4 dB Fixed Attenuator DC to 4 GHz, BNC Male to BNC Female Brass Tri-Metal Body Rated Up to 2 Watt



### SMAT7437-4

#### Features

- DC to 4 GHz Frequency Range
- Attenuation 4 dB Typical
- Max Power 2 Watts (CW)
- VSWR < 1.25:1
- 50 Ohm Impedance

#### Applications

- Wireless
- Video Signal Transmission
- Radar Systems
- Test and Measurement
- Commercial and Military Communication
- Avionics

#### Description

ShowMeCables carries a wide range of fixed attenuators with a broad selection of attenuation levels, frequency ranges, and power dissipation ranges. RF microwave attenuators (also known as RF pads) lower the amplitude of a signal (attenuate) a known amount and can be used in a wide variety of applications. These attenuators pads are used when a signal needs to be reduced to protect measurement equipment or other circuitry, to extend the range of power meters and amplifiers, and to impedance match circuits by reducing the VSWR seen by adjacent components. RF attenuators can prevent signal overload in amplifiers, receivers and detectors, adjusting the signal level to a range that is optimal. Few RF components are as commonly used as fixed coaxial attenuators, and ShowMeCables carries one of the largest in-stock varieties and ships them same day. The 4 dB Fixed Attenuator SMAT7437-4 is rated to 2 Watts and operates from DC to 4 GHz. The versatile coaxial package uses BNC male to BNC female connectors.

#### Electrical Specifications

Description	Minimum	Typical	Maximum	Units
Frequency Range	DC		4	GHz
Impedance		50		Ohms
Nominal Attenuation		4		dB
Attenuation Accuracy		0.3		dB
VSWR			1.25:1	
Input Power, CW			2	Watts

#### Mechanical Specifications

##### Size

Length	2.087 in [53.01 mm]
Width/Diameter	0.571 in [14.5 mm]
Height	0.571 in [14.5 mm]
Weight	0.057 lbs [25.85 g]
Body Material and Plating	Brass, Tri-Metal

##### Configuration

Design	Fixed
--------	-------

#### Connectors

Description	Connector 1	Connector 2
Type	BNC Male	BNC Female

4 dB Fixed Attenuator DC to 4 GHz, BNC Male to BNC  
Female Brass Tri-Metal Body Rated Up to 2 Watt



**SMAT7437-4**

**Connectors**

Description	Connector 1	Connector 2
Contact Material and Plating	Phosphor Bronze, Gold	Phosphor Bronze, Gold
Coupling Nut Material and Plating	Stainless Steel	
Body Material and Plating	Brass, Tri-Metal	Brass, Tri-Metal

**Environmental Specifications**

**Temperature**

Operating Range -55 to +125 deg C

**Compliance Certifications** (see [product page](#) for current document)

**Plotted and Other Data**

Notes:

**Typical Performance Data**

**FPO** Show Me Cables specializes in protection of highly sensitive, low voltage equipment through its patented, non-degrading silicon diode technology and custom filters. Our power quality expertise translates into a diverse product offering including AC, DC, and signal applications as well as integrated cabinets, power distribution panels and EMP hardened devices.

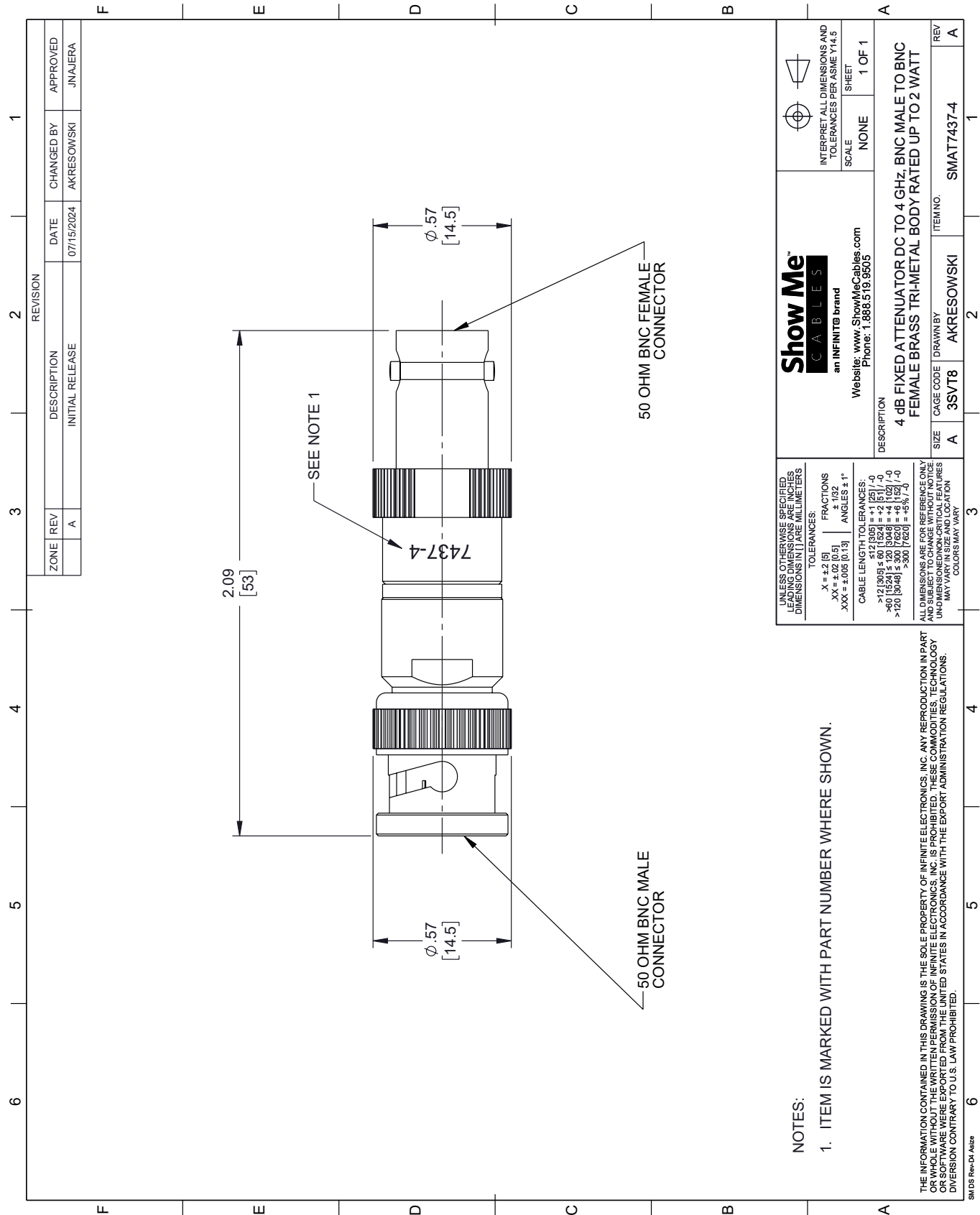
**FPO** Click the following link (or enter part number in "SEARCH" on website) to obtain additional part information including price, inventory and certifications: [4 dB Fixed Attenuator DC to 4 GHz, BNC Male to BNC Female Brass Tri-Metal Body Rated Up to 2 Watt SMAT7437-4](#)

**URL:** <https://www.showmecables.com/showmecables-4db-50ohm-fixed-attenuator-bnc-plug-to-bnc-jack-4ghz-rated-2-watt-p.aspx>

**FPO** The information contained within this document is accurate to the best of our knowledge and representative of the part described herein. It may be necessary to make modifications to the part and/or the documentation of the part in order to impliment improvements. Show Me Cables reserves the right to make such changes as required. Unless otherwise stated, all specifications are nominal. Show Me Cables does not make any representation or warranty regarding the suitability of the part described herein for any particular purpose, and Show Me Cables does not assume liability arising out of the use of any part or document.

SMAT7437-4 CAD Drawing

4 dB Fixed Attenuator DC to 4 GHz, BNC Male to BNC Female Brass Tri-Metal Body Rated Up to 2 Watt



UNLESS OTHERWISE SPECIFIED, ALL DIMENSIONS ARE IN INCHES. DIMENSIONS IN [ ] ARE IN MILLIMETERS.		Show Me CABLES an INFINITB brand Website: www.ShowMeCables.com Phone: 1.888.519.9505		INTERPRET ALL DIMENSIONS AND TOLERANCES PER ASME Y14.5 SCALE: NONE SHEET: 1 OF 1	
TOLERANCES: X = ±2 [5] .XX = ±0.02 [0.5] .XXX = ±0.005 [0.13]		FRACTIONS: ± 1/32 ANGLES ± 1°		DESCRIPTION 4 dB FIXED ATTENUATOR DC TO 4 GHz, BNC MALE TO BNC FEMALE BRASS TRI-METAL BODY RATED UP TO 2 WATT	
CABLE LENGTH TOLERANCES: >12 [305] ± 0.12 [3.05] >60 [1524] ± 0.12 [3.05] >120 [3048] ± 0.12 [3.05]		ALL DIMENSIONS ARE FOR REFERENCE ONLY. DIMENSIONS NOTED AS UNDIMENSIONED/NO-CRITICAL FEATURES MAY VARY IN SIZE AND LOCATION. COLORS MAY VARY.		REV A	
ITEM NO. SMAT7437-4		DRAWN BY AKRESOWSKI		REV A	
SIZE A		CAGE CODE 3SVT8		1	

NOTES:  
1. ITEM IS MARKED WITH PART NUMBER WHERE SHOWN.

THE INFORMATION CONTAINED IN THIS DRAWING IS THE SOLE PROPERTY OF INFINITE ELECTRONICS, INC. ANY REPRODUCTION IN PART OR WHOLE WITHOUT THE WRITTEN PERMISSION OF INFINITE ELECTRONICS, INC. IS PROHIBITED. THESE COMMODITIES, TECHNOLOGY OR SOFTWARE WERE EXPORTED FROM THE UNITED STATES IN ACCORDANCE WITH THE EXPORT ADMINISTRATION REGULATIONS. DIVISION CONTRARY TO U.S. LAW PROHIBITED.

SM DS Rev-D1 A1size