

6

5

4

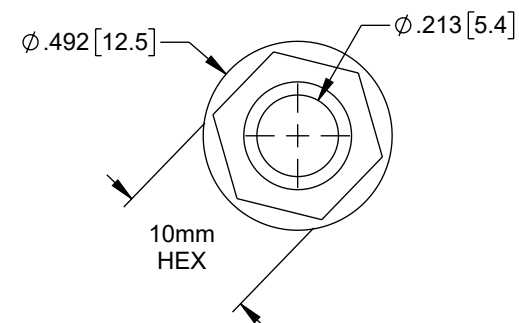
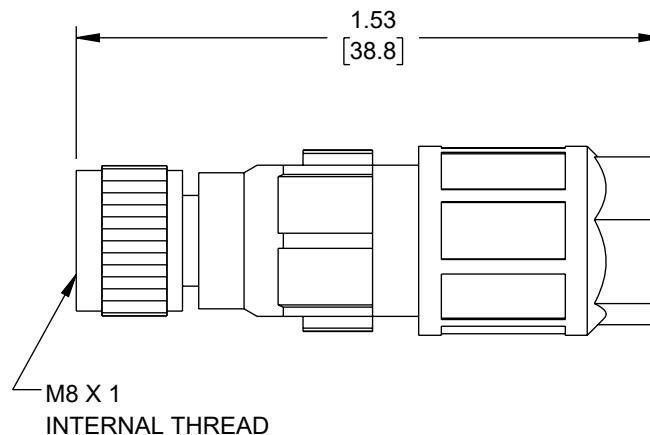
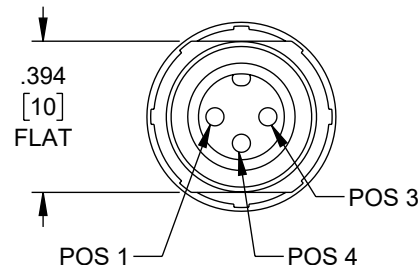
3

2

1

REVISION

ZONE	REV	DESCRIPTION	DATE	CHANGED BY	APPROVED
	A	INITIAL RELEASE	06/11/2025	KGLEBOVA	GUTTADAURO



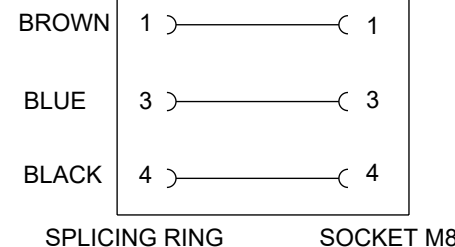
NOTES:

1. STANDARDS: DIN EN 61076-2-104 (M8).
2. CONNECTIONS: IDC TERMINAL.
3. CONTACT CARRIER MATERIAL: TPU.
4. CONTACT MATERIAL: COPPER ALLOY, GOLD PLATED.
5. GASKET MATERIAL: NBR.
6. TEMPERATURE RANGE: -25°C TO +80°C.
7. OPERATING VOLTAGE: 48V AC/60V DC.
8. NUMBER OF POSITIONS: 3.
9. CONTACT RESISTANCE: $\leq 10\text{m}\Omega$.
10. ISOLATION RESISTANCE: $\geq 100\text{M}\Omega$.
11. CABLE SEALING RANGE: 2.5 - 5mm.
12. OUTER WIRE DIA: 1.1 - 1.5mm.
13. PROTECTION: IP65 AND IP67, WHEN MATED.
14. LOCKING MATERIAL: ZINC DIE CAST, MATTE NICKEL PLATED.
15. MATING CYCLES: ≥ 100 .
16. ALL DIMENSIONS ARE FOR REFERENCE ONLY.
17. COMPONENT SHALL BE INDIVIDUALLY PACKAGED.

REGULATORY COMPLIANCE:

EU RoHS DIRECTIVE (MOST RECENT RELEASED VERSION).

WIRING DIAGRAM



THE INFORMATION CONTAINED IN THIS DRAWING IS THE SOLE PROPERTY OF INFINITE ELECTRONICS, INC. ANY REPRODUCTION IN PART OR WHOLE WITHOUT THE WRITTEN PERMISSION OF INFINITE ELECTRONICS, INC. IS PROHIBITED. THESE COMMODITIES, TECHNOLOGY OR SOFTWARE WERE EXPORTED FROM THE UNITED STATES IN ACCORDANCE WITH THE EXPORT ADMINISTRATION REGULATIONS. DIVERSION CONTRARY TO U.S. LAW PROHIBITED.

6

5

4

3

2

1

UNLESS OTHERWISE SPECIFIED
LEADING DIMENSIONS ARE INCHES
DIMENSIONS IN [] ARE MILLIMETERS

TOLERANCES:

X = ± 2 [5]	FRACTIONS
.XX = ± 0.02 [0.5]	$\pm 1/32$
.XXX = ± 0.005 [0.13]	ANGLES $\pm 1^\circ$

CABLE LENGTH TOLERANCES:

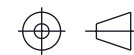
≤ 12 [305]	$= +1$ [25] / -0
>12 [305] ≤ 60 [1524]	$= +2$ [51] / -0
>60 [1524] ≤ 120 [3048]	$= +4$ [102] / -0
>120 [3048] ≤ 300 [7620]	$= +6$ [152] / -0
>300 [7620]	$= +5\%$ / -0

ALL DIMENSIONS ARE FOR REFERENCE ONLY
AND SUBJECT TO CHANGE WITHOUT NOTICE.
UN-DIMENSIONED/NON-CRITICAL FEATURES
MAY VARY IN SIZE AND LOCATION
COLORS MAY VARY

Show Me
CABLES

an INFINIT® brand

Website: www.ShowMeCables.com
Phone: 1.888.519.9505



INTERPRET ALL DIMENSIONS AND
TOLERANCES PER ASME Y14.5

SCALE	SHEET
NONE	1 OF 1

DESCRIPTION

M8 3P-F FIELD QUICKTERM 24-20AWG

SIZE	CAGE CODE	DRAWN BY	ITEM NO.	REV
A	3SVT8	KGLEBOVA	SM8FTQ3F	A