

6

5

4

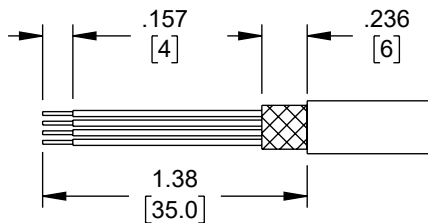
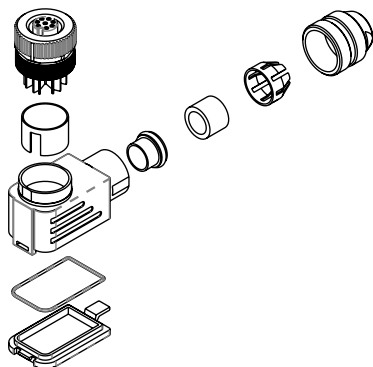
3

2

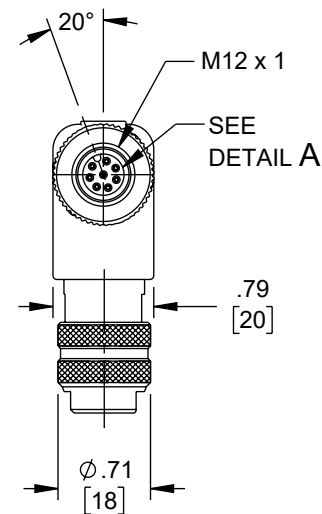
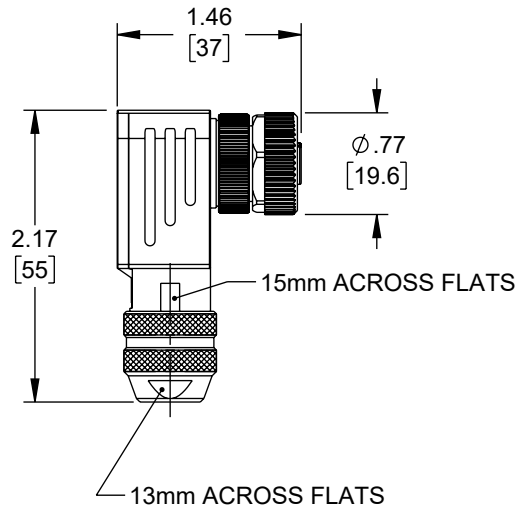
1

REVISION

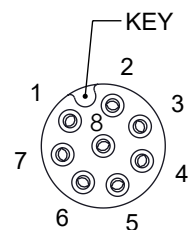
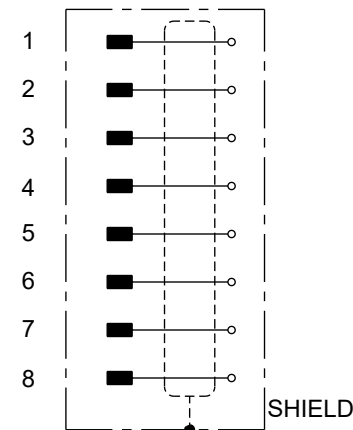
ZONE	REV	DESCRIPTION	DATE	CHANGED BY	APPROVED
	A	INITIAL RELEASE	06/06/2025	KGLEBOVA	GUTTADAURO

RECOMMENDED
STRIPPING DIMENSIONS

EXPLODED VIEW



WIRING DIAGRAM

DETAIL A
M12 FEMALE
8 POS A-CODED
CONNECTOR
OUTSIDE VIEW

NOTES:

1. CABLE OUTSIDE DIAMETER: .236 [6] - .315 [8].
2. CONDUCTOR RANGE: 0.25 - 0.5mm² (24 - 20AWG).
3. CABLE CONNECTION: SCREW TERMINAL.
4. TEMP. RANGE: -40°C TO +85°C.
5. PROTECTION: IP67 WHEN MATED AND TIGHTENED.
6. HOUSING MATERIAL: BRASS, NICKEL PLATED.
7. RECOMMENDED TORQUE: 0.6NM.
8. OPERATING VOLTAGE: 30V AC/DC.
9. OPERATING CURRENT PER CONTACT: MAX 2A.
10. SHIPS UNASSEMBLED.
11. DIMENSIONS FOR REFERENCE ONLY.

REGULATORY COMPLIANCE:
EU RoHS DIRECTIVE (MOST RECENT RELEASED VERSION).

THE INFORMATION CONTAINED IN THIS DRAWING IS THE SOLE PROPERTY OF INFINITE ELECTRONICS, INC. ANY REPRODUCTION IN PART OR WHOLE WITHOUT THE WRITTEN PERMISSION OF INFINITE ELECTRONICS, INC. IS PROHIBITED. THESE COMMODITIES, TECHNOLOGY OR SOFTWARE WERE EXPORTED FROM THE UNITED STATES IN ACCORDANCE WITH THE EXPORT ADMINISTRATION REGULATIONS. DIVERSION CONTRARY TO U.S. LAW PROHIBITED.

6

5

4

3

2

1

UNLESS OTHERWISE SPECIFIED
LEADING DIMENSIONS ARE INCHES
DIMENSIONS IN [] ARE MILLIMETERS

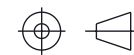
TOLERANCES:
X = ±.2 [5] FRACTIONS
.XX = ±.02 [0.5] ± 1/32
.XXX = ±.005 [0.13] ANGLES ± 1°

CABLE LENGTH TOLERANCES:
≤12 [305] = +1 [25] / -0
>12 [305] ≤ 60 [1524] = +2 [51] / -0
>60 [1524] ≤ 120 [3048] = +4 [102] / -0
>120 [3048] ≤ 300 [7620] = +6 [152] / -0
>300 [7620] = +5% / -0

ALL DIMENSIONS ARE FOR REFERENCE ONLY
AND SUBJECT TO CHANGE WITHOUT NOTICE.
UN-DIMENSIONED NON-CRITICAL FEATURES
MAY VARY IN SIZE AND LOCATION
COLORS MAY VARY

Show Me
CABLES
an INFINITE® brand

Website: www.ShowMeCables.com
Phone: 1.888.519.9505



INTERPRET ALL DIMENSIONS AND
TOLERANCES PER ASME Y14.5

SCALE NONE SHEET 1 OF 1

DESCRIPTION

M12 8A-F FIELD TERM SHD 90°

SIZE	CAGE CODE	DRAWN BY	ITEM NO.	REV
A	3SVT8	KGLEBOVA	SM12FT8AF90S	A