

6

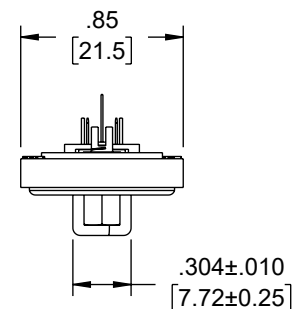
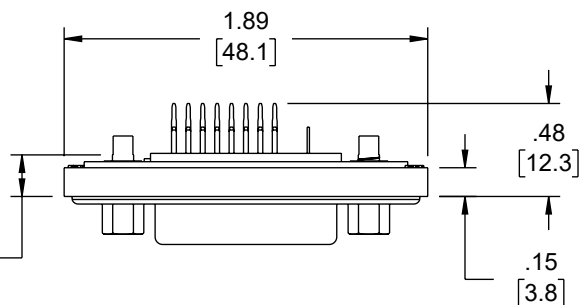
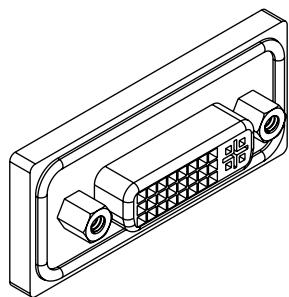
5

4

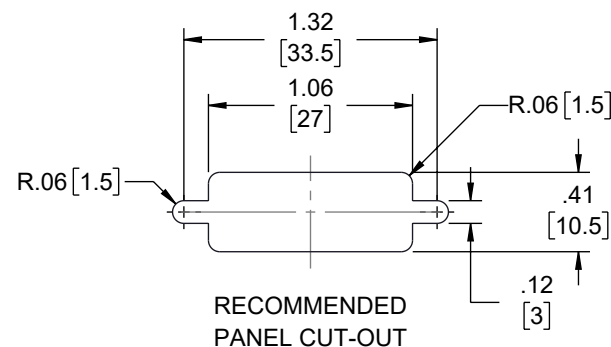
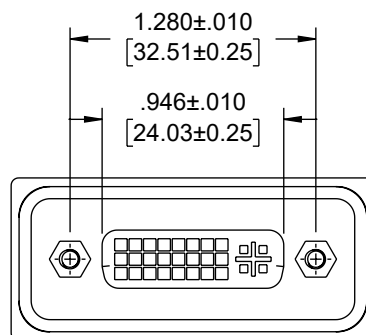
3

2

1



SCREW LENGTH:  
FOR PANEL THICKNESS < .047 [1.2]: .197 [5]  
FOR PANEL THICKNESS .047[1.2] - .079 [2]: .236 [6]



#### NOTES:

1. WATERPROOF RATING: IP68, 1M DEPTH OF WATER FOR 24 HOURS
2. MATERIAL:
  - a. DVI CONN: NYLON 66, BLACK CORE
  - b. PLASTIC JACKET: NYLON+GF, BLACK
  - c. PIN: COPPER ALLOY, GOLD PLATED
  - d. RING: SILICONE, LIGHT BLUE
  - e. SCREW: #4-40 UNC, COPPER ALLOY, NICKEL PLATED
3. COMPONENT SHALL BE TESTED FOR CONTINUITY.
4. COMPONENT SHALL BE INDIVIDUALLY PACKAGED.

#### REGULATORY COMPLIANCE:

EU RoHS DIRECTIVE (MOST RECENT RELEASED VERSION).

THE INFORMATION CONTAINED IN THIS DRAWING IS THE SOLE PROPERTY OF INFINITE ELECTRONICS, INC. ANY REPRODUCTION IN PART OR WHOLE WITHOUT THE WRITTEN PERMISSION OF INFINITE ELECTRONICS, INC. IS PROHIBITED. THESE COMMODITIES, TECHNOLOGY OR SOFTWARE WERE EXPORTED FROM THE UNITED STATES IN ACCORDANCE WITH THE EXPORT ADMINISTRATION REGULATIONS. DIVERSION CONTRARY TO U.S. LAW PROHIBITED.

6

5

4

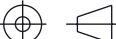
3

2

1

REVISION					
ZONE	REV	DESCRIPTION	DATE	CHANGED BY	APPROVED
	A	INITIAL RELEASE	09/06/2024	HBAKKE	GUTTADAURO

UNLESS OTHERWISE SPECIFIED LEADING DIMENSIONS ARE INCHES DIMENSIONS IN [ ] ARE MILLIMETERS	
TOLERANCES:	
X = ±.2 [5]	FRACTIONS ± 1/32
.XX = ±.02 [0.5]	ANGLES ± 1°
.XXX = ±.005 [0.13]	
CABLE LENGTH TOLERANCES:	
≤12 [305] = +1 [25] / -0	
>12 [305] ≤ 60 [1524] = +2 [51] / -0	
>60 [1524] ≤ 120 [3048] = +4 [102] / -0	
>120 [3048] ≤ 300 [7620] = +6 [152] / -0	
>300 [7620] = +5% / -0	
ALL DIMENSIONS ARE FOR REFERENCE ONLY AND SUBJECT TO CHANGE WITHOUT NOTICE. UN-DIMENSIONED/NON-CRITICAL FEATURES MAY VARY IN SIZE AND LOCATION COLORS MAY VARY	

<div><div>Show Me™</div><div>CABLES</div><div>an INFINIT® brand</div></div> <div>Website: <a href="http://www.ShowMeCables.com">www.ShowMeCables.com</a> Phone: 1.888.519.9505</div>			<div></div> <div>INTERPRET ALL DIMENSIONS AND TOLERANCES PER ASME Y14.5</div> <div><div>SCALE</div><div>NONE</div><div>SHEET</div><div>1 OF 1</div></div>	
DESCRIPTION				
WATERPROOF DVI-D FEMALE SOLDER CONNECTOR, DUAL LINK				
SIZE	CAGE CODE	DRAWN BY	ITEM NO.	REV
A	3SVT8	HBAKKE	SDVIWPDDL-SCF	A