

Passive PLC, Field Unit PLC Splitter, 1x32 Standard (Even) Split, 2m 250um Bare Fiber



PLC-132-FU1-SCA

Features

- Passive
- PLC
- Even split
- 50x7x4mm field cassette
- 1x32
- 2m 250um bare fiber leads
- -40°C to +85°C
- i-temp

Applications

- Single Mode Fiber Networking
- Single Fiber
- 1x32|| Even Split
- FTTx
- PON
- Metro transport
- Regional Distribution
- Outside Plant (ISP) Operation
- -40°C to +85°C

Description

The PLC-132-FU1-SCA is 1x32 passive PLC splitter. The PLC-132-FU1-SCA is a 50x7x4mm field cassette. The PLC-132-FU1-SCA splits 1 input signal to 32 output signals and 32 input signals into 1 composite output signal bidirectionally. The PLC-132-FU1-SCA has 2 meter 250um fiber leads. The PLC-132-FU1-SCA is a single fiber filter ideal for FTTx and PON applications. The PLC-132-FU1-SCA is rated for -40°C to +85°C. produces the high quality passive filters that your business can rely on. With products continually in stock and same-day shipping, our expert technical support and knowledgeable sales team can get you to the right parts for the job.

Configuration

Module Function

PLC Splitter

Filter Specifications

Description	Minimum	Typical	Maximum	Units
Operating Wavelength	1260		1650	nm
Pass Band Insertion Loss			16.8	dB
Return Loss	55			dB
Directivity			55	dB
PDL			0.3	dB

Size

Length

78.74 in [200 cm]

Environmental Specifications

Temperature

Operating Range

-40 to +85 deg C

Storage Range

-40 to +85 deg C

Humidity

5-95%RH

Click the following link (or enter part number in "SEARCH" on website) to obtain additional part information including price, inventory and certifications:
[Passive PLC, Field Unit PLC Splitter, 1x32 Standard \(Even\) Split, 2m 250um Bare Fiber](#)

Passive PLC, Field Unit PLC Splitter, 1x32 Standard
(Even) Split, 2m 250um Bare Fiber



Compliance Certifications (see [product page](#) for current document)

Plotted and Other Data

Notes:

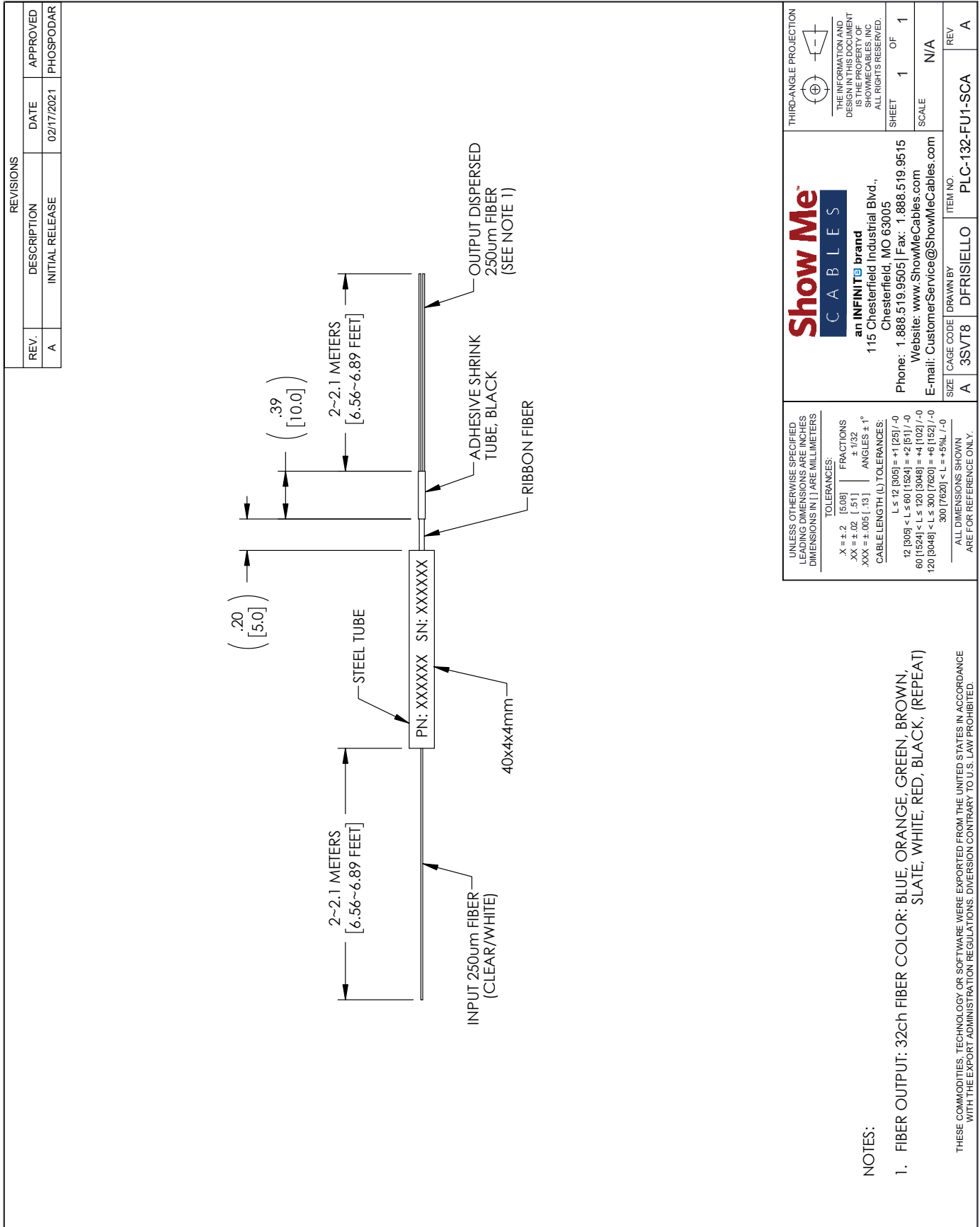
Passive PLC, Field Unit PLC Splitter, 1x32 Standard (Even) Split, 2m 250um Bare Fiber from Show Me Cables has same day shipment for domestic and International orders. Click the following link (or enter part number in “SEARCH” on website) to obtain additional part information including price, inventory and certifications.

URL: <https://www.showmecables.com/passive-plc-field-unit-plc-splitter-1x32-standard-even-split-2m-250um-bare-fiber-pps5p-32bss-22nn-p.aspx>

The information contained within this document is accurate to the best of our knowledge and representative of the part described herein. It may be necessary to make modifications to the part and/or the documentation of the part in order to implement improvements. Show Me Cables reserves the right to make such changes as required. Unless otherwise stated, all specifications are nominal. Show Me Cables does not make any representation or warranty regarding the suitability of the part described herein for any particular purpose, and Show Me Cables does not assume liability arising out of the use of any part or document.

Passive PLC, Field Unit PLC Splitter, 1x32 Standard (Even) Split, 2m 250um Bare Fiber

PLC-132-FU1-SCA CAD Drawing



NOTES:

- FIBER OUTPUT: 32ch FIBER COLOR: BLUE, ORANGE, GREEN, BROWN, SLATE, WHITE, RED, BLACK. (REPEAT)

THESE COMMODITIES, TECHNOLOGY OR SOFTWARE WERE EXPORTED FROM THE UNITED STATES IN ACCORDANCE WITH THE EXPORT ADMINISTRATION REGULATIONS. DIVERSION CONTRARY TO U.S. LAW PROHIBITED.

<p>UNLESS OTHERWISE SPECIFIED, LEADING DIMENSIONS ARE IN INCHES DIMENSIONS IN [] ARE MILLIMETERS</p> <p>TOLERANCES:</p> <p>X = ±.2 [5.08] FRACTIONS ±1/32</p> <p>.XX = ±.02 [5.1] ANGLES ± 1°</p> <p>XXX = ±.005 [1.3] </p> <p>CABLE LENGTH (L) TOLERANCES:</p> <p>L ≤ 12 [305] = ±1.25 [1.0]</p> <p>12 [305] < L ≤ 60 [1524] = ±2 [51] [1.0]</p> <p>60 [1524] < L ≤ 120 [3048] = ±4 [102] [1.0]</p> <p>120 [3048] < L ≤ 300 [7620] = ±6 [152] [1.0]</p> <p>300 [7620] < L = +5%L / -1.0</p> <p>ALL DIMENSIONS SHOWN ARE FOR REFERENCE ONLY.</p>		<p>THIRD-ANGLE PROJECTION</p> <p>THE INFORMATION AND DESIGN IN THIS DOCUMENT IS THE PROPERTY OF SHOWME CABLES, INC. ALL RIGHTS RESERVED.</p> <p>SHEET 1 OF 1</p> <p>SCALE N/A</p>
<p>Show Me CABLES an INFINITI brand 115 Chesterfield Industrial Blvd., Chesterfield, MO 63005 Phone: 1.888.519.9515 Fax: 1.888.519.9515 Website: www.ShowMeCables.com E-mail: CustomerService@ShowMeCables.com</p>		<p>REV A</p> <p>APPROVED PHOSPODAR</p>
<p>REV. A</p> <p>DESCRIPTION INITIAL RELEASE</p> <p>DATE 02/17/2021</p>	<p>CAGE CODE A 3SVT8</p> <p>DRAWN BY DFRISIELLO</p> <p>ITEM NO. PLC-132-FU1-SCA</p>	<p>REV A</p>

T-Rev D