

Passive PLC, 1 RU 19" Rack Mount PLC Splitter,  
1x32 Standard (Even) Split, SC-APC



## PLC-132-1RU-SCA

### Features

- Passive
- PLC
- Even split
- 19" Rack Mount
- 1x32
- SC/APC connectors

### Applications

- Single Mode Fiber Networking
- Single Fiber
- 1x32|| Even Split
- FTTx
- PON
- Metro transport
- Regional Distribution
- Inside Plant (ISP) Operation

### Description

The PLC-132-1RU-SCA is 1x32 passive PLC splitter . The PLC-132-1RU-SCA is a 1RU 19" Rack Mount filter. The PLC-132-1RU-SCA splits 1 input signal to 32 output signals and 32 input signals into 1 composite output signal bidirectionally. The PLC-132-1RU-SCA has SC/APC connectors. The PLC-132-1RU-SCA is a single fiber filter ideal for FTTx and PON applications. produces the high quality passive filters that your business can rely on. With products continually in stock and same-day shipping, our expert technical support and knowledgeable sales team can get you to the right parts for the job.

### Configuration

Module Function

PLC Splitter

### Filter Specifications

Description	Minimum	Typical	Maximum	Units
Operating Wavelength	1260		1650	nm
Pass Band Insertion Loss			16.8	dB
Return Loss	55			dB
Directivity			55	dB
PDL			0.3	dB

### Size

Length 19 in [482.6 mm]

### Environmental Specifications

#### Temperature

Operating Range -20 to +65 deg C  
Storage Range -40 to +85 deg C

Humidity 5-95%RH

**Compliance Certifications** (see [product page](#) for current document)

### Plotted and Other Data

Notes:

Click the following link (or enter part number in "SEARCH" on website) to obtain additional part information including price, inventory and certifications:  
[Passive PLC, 1 RU 19" Rack Mount PLC Splitter, 1x32 Standard \(Even\) Split, SC-APC](#)

Passive PLC, 1 RU 19" Rack Mount PLC Splitter,  
1x32 Standard (Even) Split, SC-APC



---

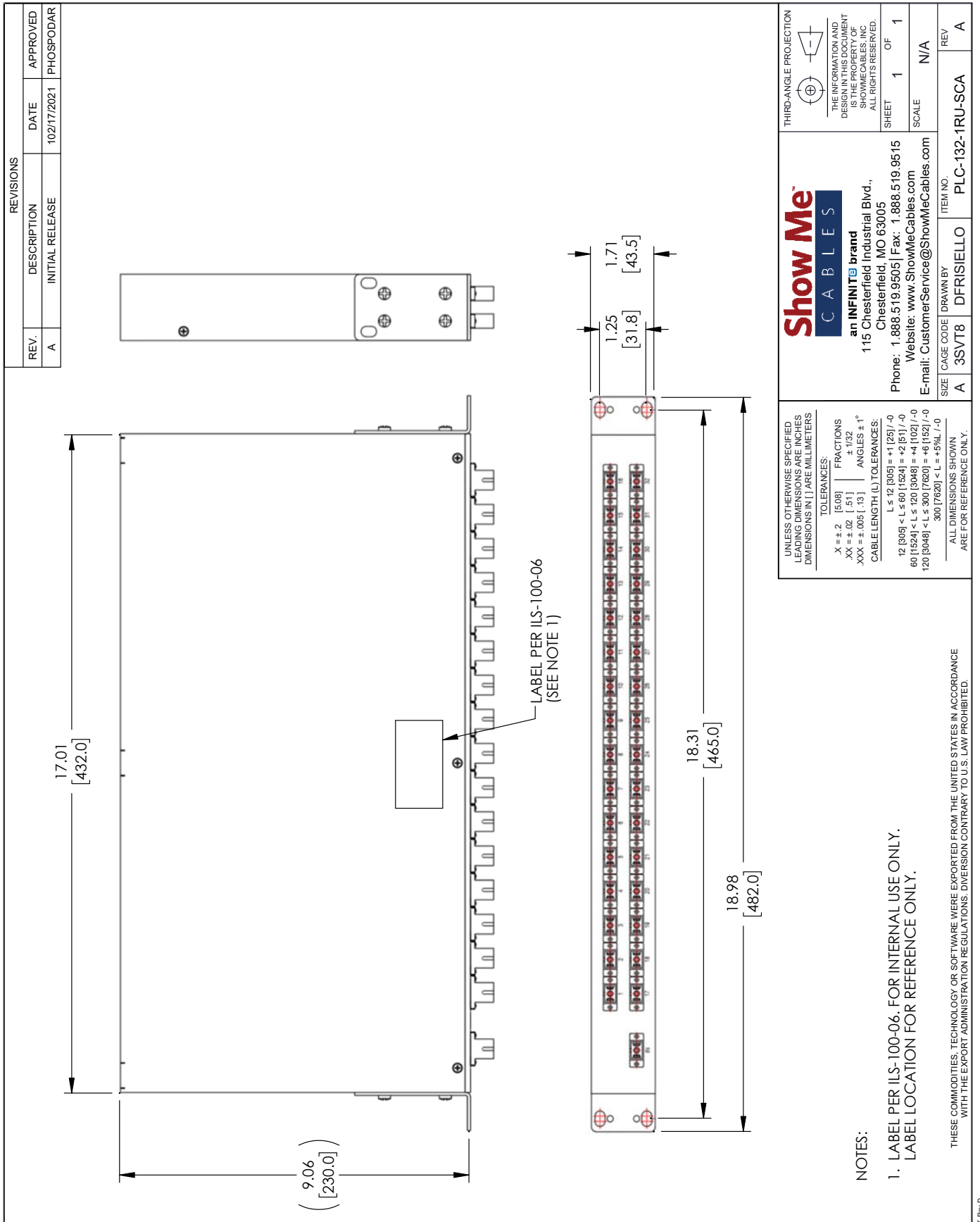
Passive PLC, 1 RU 19" Rack Mount PLC Splitter, 1x32 Standard (Even) Split, SC-APC from Show Me Cables has same day shipment for domestic and International orders. Click the following link (or enter part number in "SEARCH" on website) to obtain additional part information including price, inventory and certifications.

URL: <https://www.showmecables.com/passive-plc-1-ru-19-inch-rack-mount-plc-splitter-1x32-standard-even-split-sc-apc-pps3p-32bss-nn5n-p.aspx>

The information contained within this document is accurate to the best of our knowledge and representative of the part described herein. It may be necessary to make modifications to the part and/or the documentation of the part in order to implement improvements. Show Me Cables reserves the right to make such changes as required. Unless otherwise stated, all specifications are nominal. Show Me Cables does not make any representation or warranty regarding the suitability of the part described herein for any particular purpose, and Show Me Cables does not assume liability arising out of the use of any part or document.

# Passive PLC, 1 RU 19" Rack Mount PLC Splitter, 1x32 Standard (Even) Split, SC-APC

## PLC-132-1RU-SCA CAD Drawing



**NOTES:**

1. LABEL PER ILS- 100-06. FOR INTERNAL USE ONLY. LABEL LOCATION FOR REFERENCE ONLY.

THESE COMMODITIES, TECHNOLOGY OR SOFTWARE WERE EXPORTED FROM THE UNITED STATES IN ACCORDANCE WITH THE EXPORT ADMINISTRATION REGULATIONS. DIVERSION CONTRARY TO U.S. LAW PROHIBITED.

<p>UNLESS OTHERWISE SPECIFIED LEADING DIMENSIONS ARE INCHES DIMENSIONS IN [ ] ARE MILLIMETERS</p> <p>TOLERANCES:</p> <p>X = ±.2 [5.08]    FRACTIONS ±.1/32</p> <p>.XX = ±.02 [1.51]    ANGLES ± 1°</p> <p>XXX = ±.005 [1.3]    CABLE LENGTH (L) TOLERANCES:</p> <p>L ≤ 12 [305] = ±1.25 / -0</p> <p>12 [305] &lt; L ≤ 60 [1524] = ±2 [51] / -0</p> <p>60 [1524] &lt; L ≤ 120 [3048] = ±4 [102] / -0</p> <p>120 [3048] &lt; L ≤ 300 [7620] = ±6 [152] / -0</p> <p>300 [7620] &lt; L = +5%L / -0</p> <p>ALL DIMENSIONS SHOWN ARE FOR REFERENCE ONLY.</p>		<p>THIRD-ANGLE PROJECTION</p> <p>THE INFORMATION AND DESIGN IN THIS DOCUMENT IS THE PROPERTY OF SHOWME CABLES, INC. ALL RIGHTS RESERVED.</p> <p>SHEET 1 OF 1</p> <p>SCALE N/A</p>
<p><b>Show Me CABLES</b></p> <p>an INFINITI brand</p> <p>115 Chesterfield Industrial Blvd., Chesterfield, MO 63005</p> <p>Phone: 1.888.519.9505   Fax: 1.888.519.9515</p> <p>Website: www.ShowMeCables.com</p> <p>E-mail: CustomerService@ShowMeCables.com</p>		<p>REV A</p> <p>APPROVED PHOSPODAR</p> <p>DATE 10/27/2021</p>
<p>SIZE A</p> <p>CAGE CODE 3SVT8</p> <p>DRAWN BY DFRISIELLO</p> <p>ITEM NO. PLC-132-1RU-SCA</p>	<p>REV A</p>	

T-Rev D