

6

5

4

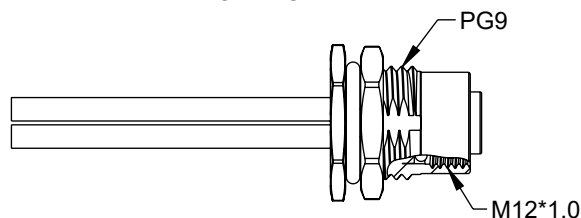
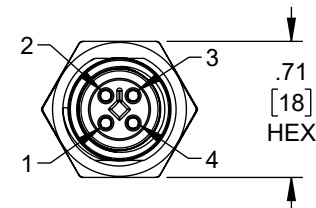
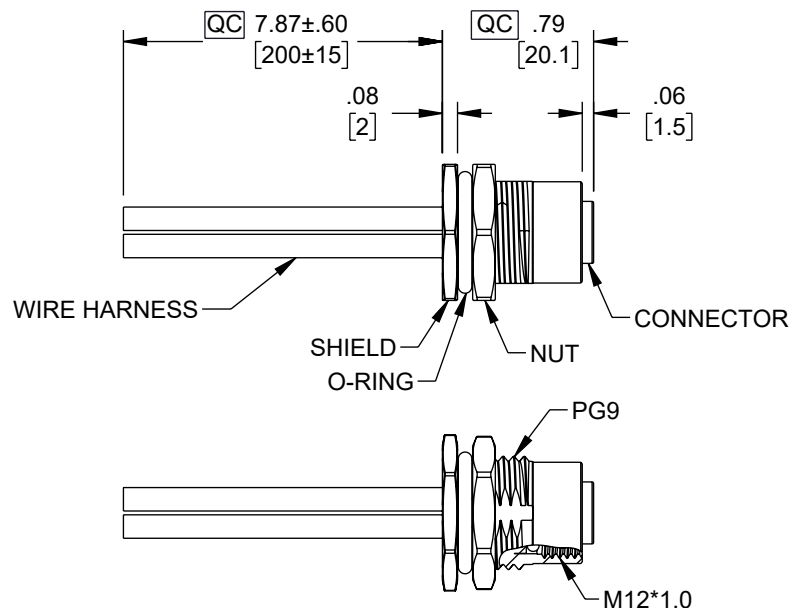
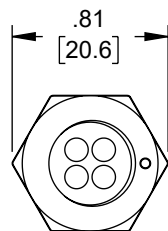
3

2

1

REVISION

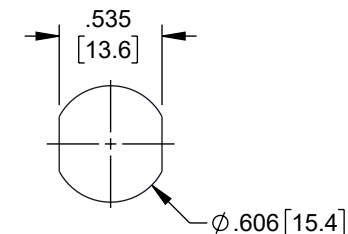
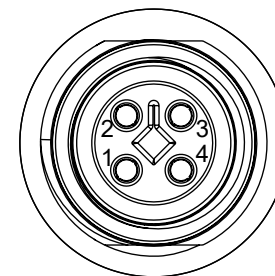
ZONE	REV	DESCRIPTION	DATE	CHANGED BY	APPROVED
	A	INITIAL RELEASE	11/06/2024	DMAY	DGUTTADAURO



NOTES:

1. **QC** IMPORTANT DIMENSION.
2. WATERPROOF RATE: IP68, UNMATED 1m/24h
IP69K, MATED
3. CONNECTOR:
 1. HOUSING: THERMOPLASTIC, BLACK
 2. PIN: COPPER ALLOY, GOLD PLATED
 3. O-RING: RUBBER, GREEN
4. SHIELD: METAL
5. NUT: METAL
6. O-RING: RUBBER, BLACK
7. WIRE HARNESS: UL1015, 16AWG
8. FOR PANEL THICKNESS MAX: 4.5mm
9. O-RING AND NUT ARE ASSEMBLED ON CONNECTORS
10. TEMPERATURE RANGE: -20°C TO +85°C
11. OPERATING VOLTAGE: 63V
12. NOMINAL CURRENT: 12A

PIN OUT	
PIN#	WIRE
1	BROWN
2	WHITE
3	BLUE
4	BLACK

RECOMMENDED
PANEL CUT-OUT4P
PIN ASSIGNMENTS
FRONT VIEWREGULATORY COMPLIANCE:
EU RoHS DIRECTIVE (MOST RECENT RELEASED VERSION).

THE INFORMATION CONTAINED IN THIS DRAWING IS THE SOLE PROPERTY OF INFINITE ELECTRONICS, INC. ANY REPRODUCTION IN PART OR WHOLE WITHOUT THE WRITTEN PERMISSION OF INFINITE ELECTRONICS, INC. IS PROHIBITED. THESE COMMODITIES, TECHNOLOGY OR SOFTWARE WERE EXPORTED FROM THE UNITED STATES IN ACCORDANCE WITH THE EXPORT ADMINISTRATION REGULATIONS. DIVERSION CONTRARY TO U.S. LAW PROHIBITED.

6

5

4

3

2

1

UNLESS OTHERWISE SPECIFIED
LEADING DIMENSIONS ARE INCHES
DIMENSIONS IN [] ARE MILLIMETERS

TOLERANCES:
X = ±.2 [5] FRACTIONS ± 1/32
.XX = ±.02 [0.5] ANGLES ± 1°
.XXX = ±.005 [0.13]

CABLE LENGTH TOLERANCES:
≤12 [305] = +1 [25] / -0
>12 [305] ≤ 60 [1524] = +2 [51] / -0
>60 [1524] ≤ 120 [3048] = +4 [102] / -0
>120 [3048] ≤ 300 [7620] = +6 [152] / -0
>300 [7620] = +5% / -0

ALL DIMENSIONS ARE FOR REFERENCE ONLY
AND SUBJECT TO CHANGE WITHOUT NOTICE.
UN-DIMENSIONED/NON-CRITICAL FEATURES
MAY VARY IN SIZE AND LOCATION
COLORS MAY VARY

Show Me
CABLES
an INFINITE® brand

Website: www.ShowMeCables.com
Phone: 1.888.519.9505



INTERPRET ALL DIMENSIONS AND
TOLERANCES PER ASME Y14.5

SCALE NONE SHEET 1 OF 1

DESCRIPTION
M12 DC POWER 4 PIN T CODE FEMALE RECEPTACLE, IP68
IP69K RATED, 63V, 12A, PG9 FRONT PANEL MOUNT STYLE
WITH 16AWG UL1015 PVC 0.2M LEADS

SIZE	CAGE CODE	DRAWN BY	ITEM NO.	REV
A	3SVT8	DMAY	M124TF-REC-PG9F-L	A