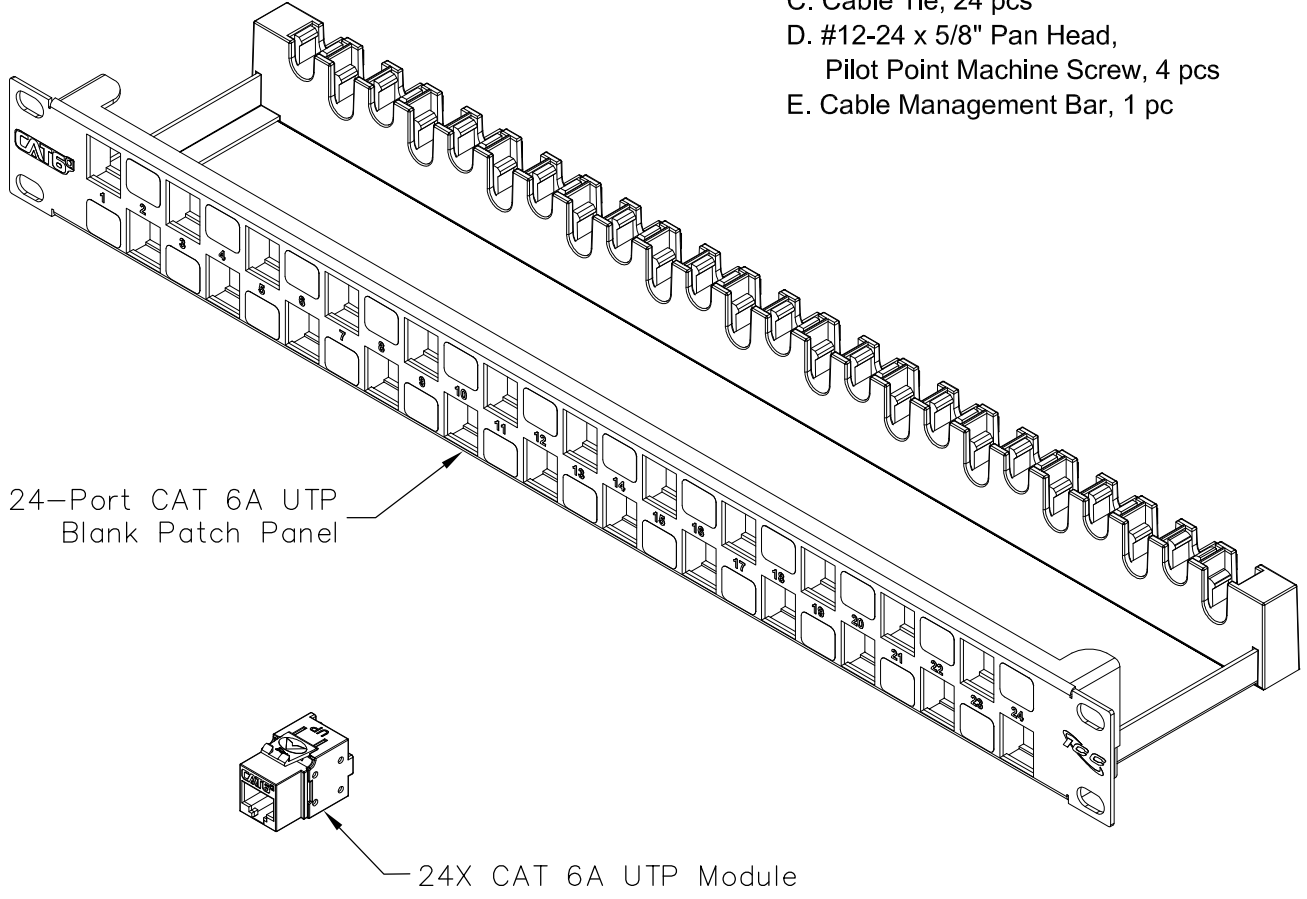


24-Port CAT 6A UTP Blank Patch Panel w/24 CAT 6A Inserts

PRODUCT SPECIFICATION

Package includes:

- A. 24-Port CAT6A UTP Blank Patch Panel, 1 pc
- B. CAT 6a, UTP, Modular Insert, 24 pcs
- C. Cable Tie, 24 pcs
- D. #12-24 x 5/8" Pan Head,
Pilot Point Machine Screw, 4 pcs
- E. Cable Management Bar, 1 pc




24-Port CAT 6A UTP
Blank Patch Panel

24X CAT 6A UTP Module

Features and Benefits:

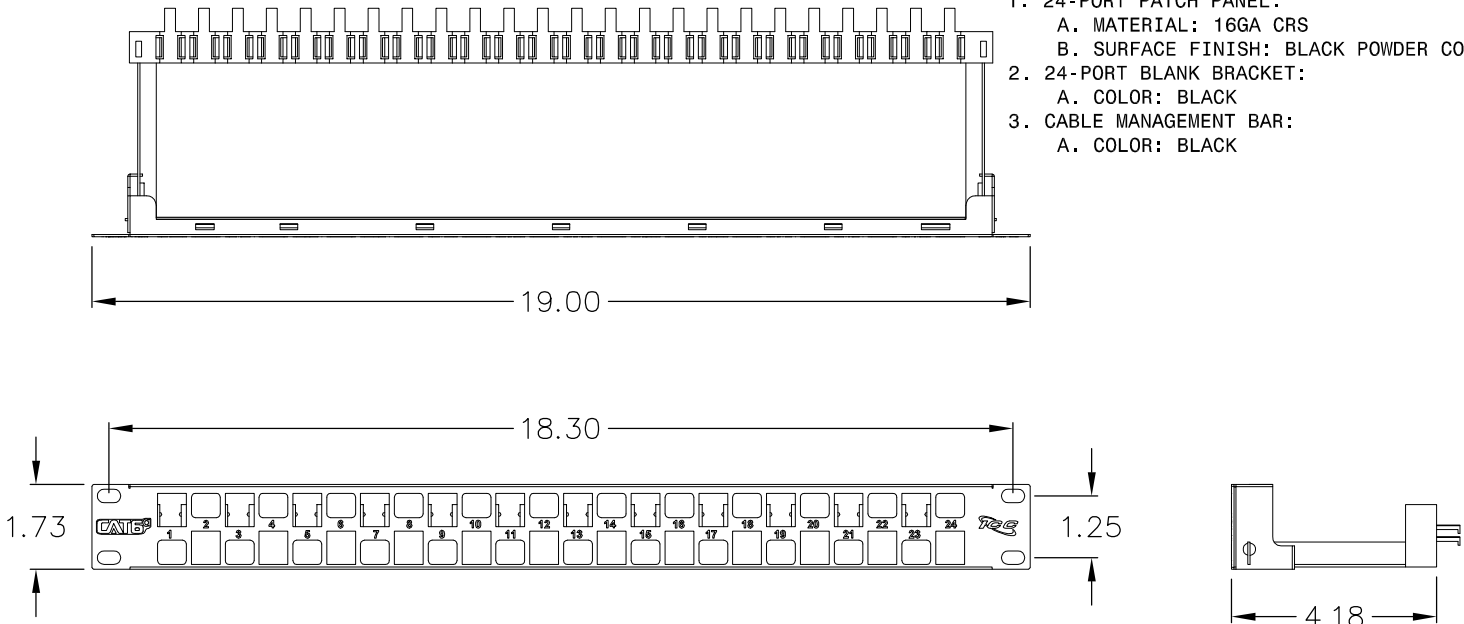
- Accommodates ICC CAT6A UTP Modular Connector
- Designed to minimize the alien crosstalk for 10G applications
- Includes rear cable management to facilitate proper bend radius of cable
- Compatible with standard 19" distribution racks

PATCH PANEL, CAT 6A, 24-PT, KIT, 1 RMS			
ITEM NO.	ICMPP246AU		REV. A
DWG NO.	PSMPP246AU		PAGE NO. 1

CUSTOMER CARE / TECHNICAL SUPPORT * CSR@ICC.COM / 888-ASK-4-ICC (275-4422) * 14700 Alondra Blvd, La Mirada, CA 90638 * Phone 562-356-3111 * Fax 562-356-3100 * www.icc.com

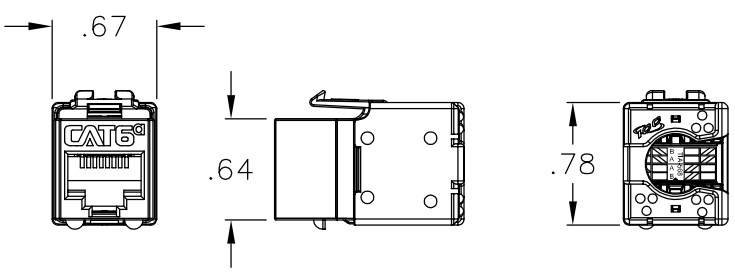
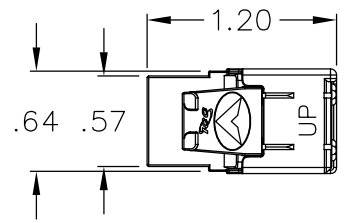
NOTE: UNLESS OTHERWISE SPECIFIED

- 1. 24-PORT PATCH PANEL:
 - A. MATERIAL: 16GA CRS
 - B. SURFACE FINISH: BLACK POWDER COAT
- 2. 24-PORT BLANK BRACKET:
 - A. COLOR: BLACK
- 3. CABLE MANAGEMENT BAR:
 - A. COLOR: BLACK



NOTE: UNLESS OTHERWISE SPECIFIED

- 1. CERTIFICATION:
 - A. MEETS ANSI/TIA-568-C.2 (500MHz)
- 2. ENVIRONMENTAL CONDITION:
 - A. STORAGE: -40 TO +70° C
 - B. OPERATION: -10 TO +60° C
- 3. ELECTRICAL:
 - A. ELECTRICAL INSULATION RESISTANCE: 500 MΩ MIN @ 100V DC
 - B. DIELECTRIC WITHSTANDING VOLTAGE: 1000V DC OR AC PEAK CONTACT TO CONTACT @ 60Hz FOR 1 MINUTE
 - C. SPRING WIRE CONTACT RESISTANCE: 20 MΩ MAX.
 - D. IDC CONTACT RESISTANCE: 2.5 MΩ MAX.
- 4. MECHANICAL:
 - A. RETENTION: 50N (11 LBF) FOR 60s +/-5s
 - B. INSERTION/EXTRACTION LIFE: 750 CYCLES MIN.
- 5. CAT 6A MODULE:
 - A. MATERIAL:
 - HOUSING: HIGH-IMPACT, FLAME RETARDANT PLASTIC, UL 94V-0
 - IDC HOUSING: HIGH-IMPACT, FLAME RETARDANT PLASTIC, UL 94V-0
 - IDC CONTACT: PHOSPHOR BRONZE ALLOY WITH 100μ, 100% SN ALLOY
 - WIRE GAUGE: 23~24 AWG SOLID WIRE
 - SPRING WIRE: PHOSPHOR BRONZE ALLOY PLATED WITH 50μ GOLD OVER 70~100μ NICKEL
- 6. SHIELDED WIRE CAP:
 - A. MATERIAL: HIGH-IMPACT, FLAME RETARDANT PLASTIC, UL 94V-0



PATCH PANEL, CAT 6A, 24-PT, KIT, 1RMS

ITEM NO. ICMPP246AU
 DWG NO. PSMPP246AU

REV. A
 PAGE NO. 2



CUSTOMER CARE / TECHNICAL SUPPORT * CSR@ICC.COM / 888-ASK-4-ICC (275-4422) * 14700 Alondra Blvd, La Mirada, CA 90638 * Phone 562-356-3111 * Fax 562-356-3100 * www.icc.com