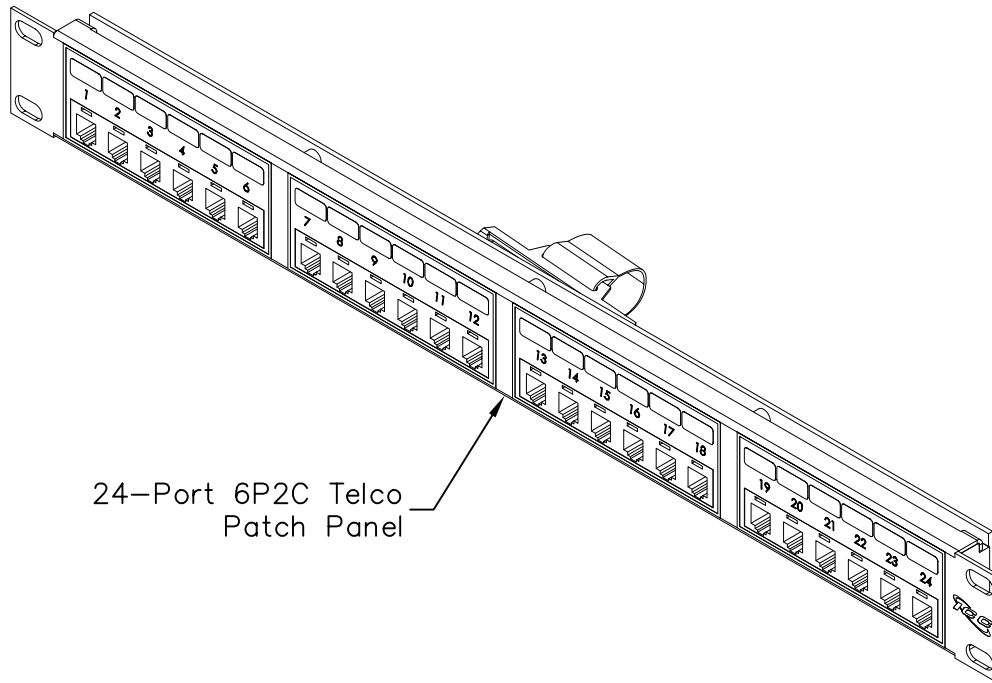


24-Port 6P2C Telco Patch Panel

PRODUCT SPECIFICATION

Package includes:

- A. 24-Port 6P2C Telco Patch Panel, 1 pc
- B. #12-24 x 5/8" Pan Head, Pilot Point Machine Screw, 4 pcs
- C. Installation Instructions, 1 sheet



Features and Benefits:

- Rack mounted 6-position 2-conductor Telco patch panel provides voice connectivity applications
- Integrated with 1 male 50-pin telco connector
- Designed to fit all standard 19" racks and cabinets
- 1 rack mount space (RMS)
- Used with ICLC2, ICLC4, and ICLC6 line cords
- Installation instructions #MSR-0259 included
- UL listed

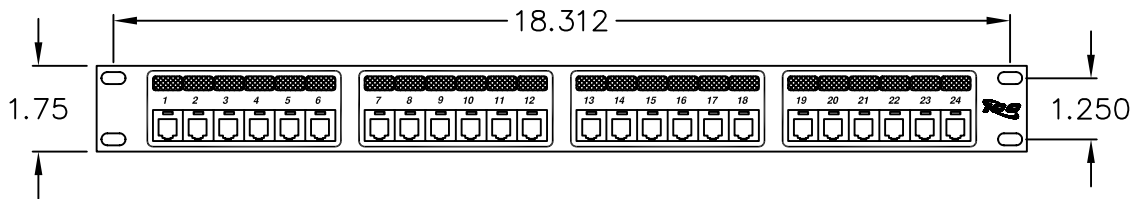
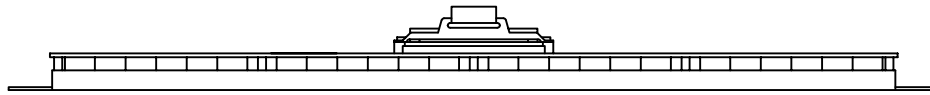
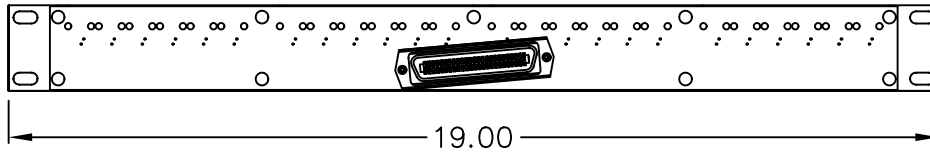
PATCH PANEL, TELCO, 6P2C, 24-PORT, 1 RMS

ITEM NO.	ICMPP024T2
DWG NO.	PSMPP024T2

REV.	A
PAGE NO.	1



CUSTOMER CARE / TECHNICAL SUPPORT * CSR@ICC.COM / 888-ASK-4-ICC (275-4422) * 14700 Alondra Blvd., La Mirada, CA 90638 * www.icc.com



WIRING CHART

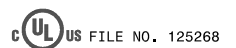
TELCO 50-PIN	USOC RJ-11, 2-WIRE
26	4
1	3
27	4
2	3
28	4
3	3
29	4
4	3
30	4
5	3
31	4
6	3
32	4
7	3
33	4
8	3
34	4
9	3
35	4
10	3
36	4
11	3
37	4
12	3
38	4
13	3
39	4
14	3
40	4
15	3
41	4
16	3
42	4
17	3
43	4
18	3
44	4
19	3
45	4
20	3
46	4
21	3
47	4
22	3
48	4
23	3
49	4
24	3
50	OPEN
25	OPEN
NO. OF PORTS	24

NOTE: UNLESS OTHERWISE SPECIFIED

1. MATERIAL:

- A. 24-PORT PATCH PANEL: 16 GA CRS
- B. JACK HOUSING: ABS, UL 94V-0
- C. SPRING WIRE: SQUARE SPRING WIRE, TEMPERED PHOSPHOR BRONZE
- D. GOLD RATING: 50 MICRO INCHES OF GOLD OVER 100 MICRO INCHES OF NICKEL

2. SURFACE FINISH: BLACK POWDER COAT



PATCH PANEL, TELCO, 6P2C, 24-PORT, 1 RMS		<p style="font-size: small; margin: 0;">PremiumProducts ProvenPerformance CompetitivePrices</p>	
ITEM NO.	ICMPP024T2		REV. A
DWG NO.	PSMPP024T2		PAGE NO. 2

CUSTOMER CARE / TECHNICAL SUPPORT * CSR@ICC.COM / 888-ASK-4-ICC (275-4422) * 14700 Alondra Blvd., La Mirada, CA 90638 * www.icc.com