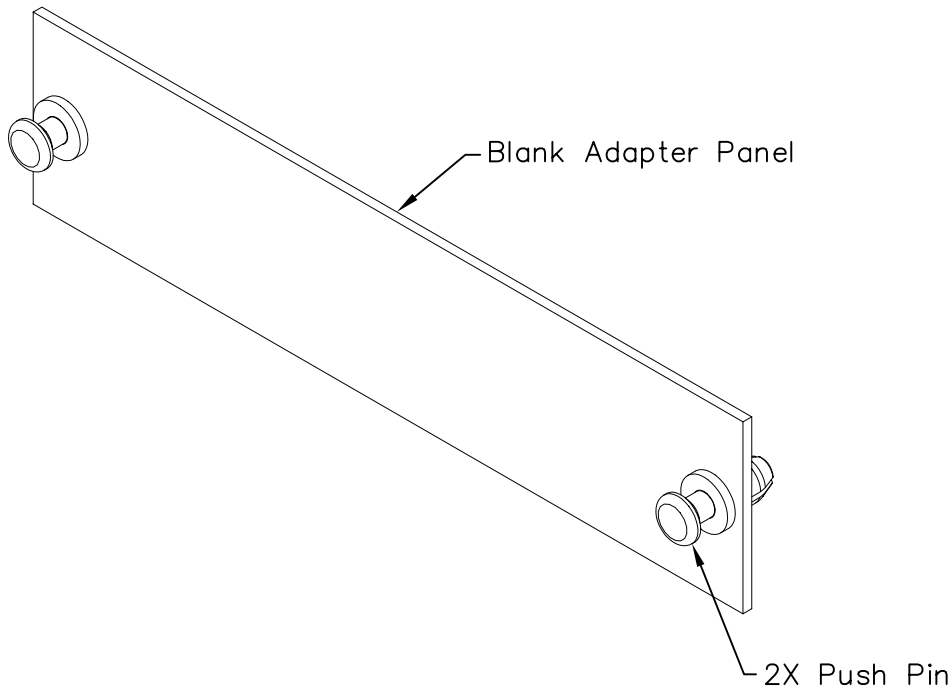


Blank Adapter Panel

PRODUCT SPECIFICATION

Package includes:

- A. Blank Adapter Panel, 1 pc
- B. Push Pin, 2 pcs



Features and Benefits:

- Covers unused openings
- Provides a neat and clean appearance
- Allows space for future expansion
- Designed to fit ICFORPP1RM and ICFORPP2RM blank fiber optic patch panels, ICFOR fiber optic rack mount enclosures, and ICFOD fiber optic wall mount enclosures
- Available in black

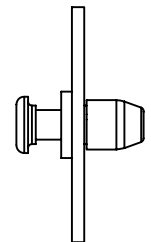
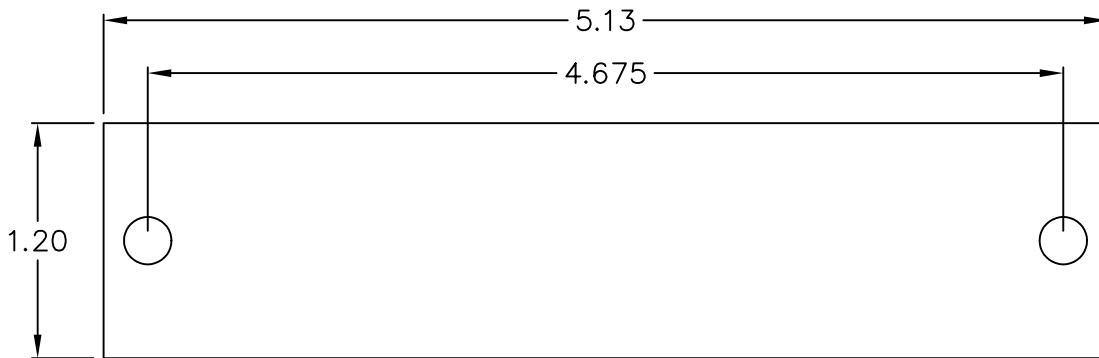
ADAPTER PANEL, BLANK, BLACK

ITEM NO.	ICFOPB00BK
DWG NO.	PSFOPB00BK

REV.	A
PAGE NO.	1




CUSTOMER CARE / TECHNICAL SUPPORT * CSR@ICC.COM / 888-ASK-4-ICC (275-4422) * 14700 Alondra Blvd., La Mirada, CA 90638 * www.icc.com



NOTE: UNLESS OTHERWISE SPECIFIED

1. MATERIAL: 16 GA GALVANNEALED STEEL
2. SURFACE FINISHING: BLACK POWDER COAT
3. COLOR: BK: BLACK

ADAPTER PANEL, BLANK, BLACK		 <i>PremiumProducts</i> <i>ProvenPerformance</i> <i>CompetitivePrices</i>	
ITEM NO.	ICFOPB00BK		REV. A
DWG NO.	PSFOPB00BK	PAGE NO.	2

CUSTOMER CARE / TECHNICAL SUPPORT * CSR@ICC.COM / 888-ASK-4-ICC (275-4422) * 14700 Alondra Blvd., La Mirada, CA 90638 * www.icc.com