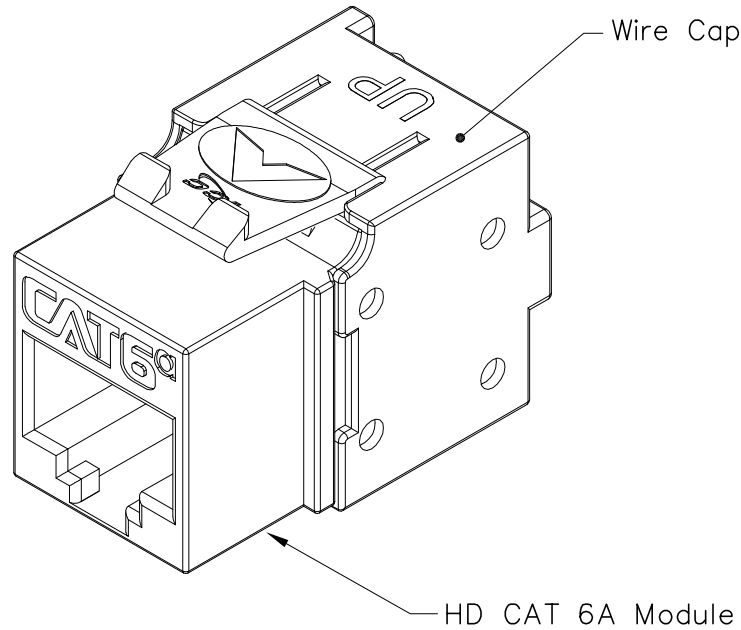


8P8C High Density Category 6A Module

PRODUCT SPECIFICATION

Package includes:

- A. 8P8C HD Category 6A Module, 1 pc
- B. Shielded Wire Cap, 1 pc



Features and Benefits:

- CAT 6A rated connectors provide excellent performance for data networks requiring maximum speed and bandwidth
- PCB technology provides maximum performance and superior signal quality
- Enhanced crosstalk cancellation reduces return loss and improves performance by rejecting noise and unwanted signals
- Engineered to provide 110 IDC termination reducing installation time
- Used with ICC 110 punch down tool ICACSPDT00
- Includes an integrated TIA-568A/B color wiring diagram
- Reduced rear footprint allows for greater connectivity density and provides for more port configurations in a smaller area
- Compatible with ICC CAT6A blank patch panels, ICMPP0246A

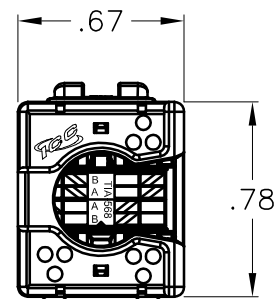
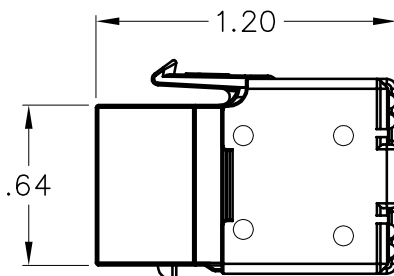
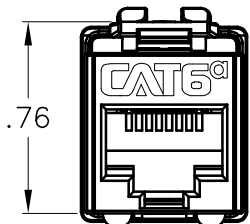
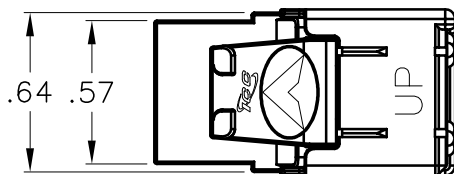
MODULE, CAT 6A, HD

ITEM NO.	IC1078GAXX
DWG NO.	PS1078GA00

REV.	C
PAGE NO.	1



CUSTOMER CARE / TECHNICAL SUPPORT * CSR@ICC.COM / 888-ASK-4-ICC (275-4422) * 16800 Edwards Road, Cerritos, CA 90703 * Phone 562-356-3111 * Fax 562-356-3100 * www.icc.com



NOTE: UNLESS OTHERWISE SPECIFIED

1. CERTIFICATION:

A. MEETS TIA/EIA-568-B.2-10 CAT.6A

2. ENVIRONMENTAL CONDITION:

A. STORAGE: -40 TO +70° C

B. OPERATION: -10 TO +60° C

3. ELECTRICAL:

A. ELECTRICAL INSULATION RESISTANCE: 500 MΩ MIN @ 100V DC

B. DIELECTRIC WITHSTANDING VOLTAGE: 1000V DC OR AC PEAK CONTACT TO CONTACT @ 60Hz FOR 1 MINUTE

C. SPRING WIRE CONTACT RESISTANCE: 20 MΩ MAX.

D. IDC CONTACT RESISTANCE: 2.5 MΩ MAX.

4. MECHANICAL:

A. RETENTION: 50N (11 LBF) FOR 60s +/-5s

B. INSERTION/EXTRACTION LIFE: 750 CYCLES MIN.

5. CAT 6A MODULE:

A. MATERIAL:

-HOUSING: HIGH-IMPACT, FLAME RETARDANT PLASTIC, UL 94V-0

-IDC HOUSING: HIGH-IMPACT, FLAME RETARDANT PLASTIC, UL 94V-0

-IDC CONTACT: PHOSPHOR BRONZE ALLOY WITH 100μ, 100% SN ALLOY

-WIRE GAUGE: 23~24 AWG SOLID WIRE

-SPRING WIRE: PHOSPHOR BRONZE ALLOY PLATED WITH 50μ GOLD OVER 70~100μ NICKEL

B. COLORS: XX = BL-BLUE & WH-WHITE

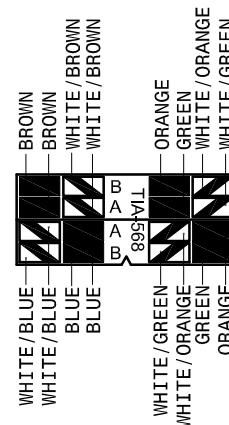
6. SHIELDED WIRE CAP:

A. MATERIAL: HIGH-IMPACT, FLAME RETARDANT PLASTIC, UL 94V-0

B. COLOR: BLACK

CATEGORY 6A CONNECTING HARDWARE REQUIREMENTS															
FREQUENCY (MHz)	1.0	4.0	8.0	10.0	16.0	20.0	25.0	31.25	62.5	100	200	250	300	400	500
NEXT LOSS (db)	75.0	75.0	75.0	74.0	69.0	68.0	66.0	64.1	58.1	54.0	48.0	46.0	42.9	37.9	34.0
FEXT LOSS (db)	75.0	71.1	65.0	63.1	59.0	57.1	55.1	53.2	47.2	43.1	37.1	35.1	33.6	31.1	29.1
RETURN LOSS (db)	30.0	30.0	30.0	30.0	30.0	30.0	30.0	30.0	30.0	28.0	22.0	20.0	18.5	16.0	14.0
INSERTION LOSS(db)	0.10	0.10	0.10	0.10	0.10	0.10	0.10	0.11	0.16	0.20	0.28	0.32	0.35	0.40	0.45

WIRING DIAGRAM



UL US FILE NO. XXXXX

MODULE, CAT 6A, HD

ITEM NO. IC1078GAXX

REV. C

DWG NO. PS1078GA00

PAGE NO. 2



CUSTOMER CARE / TECHNICAL SUPPORT * CSR@ICC.COM / 888-ASK-4-ICC (275-4422) * 16800 Edwards Road, Cerritos, CA 90703 * Phone 562-356-3111 * Fax 562-356-3100 * www.icc.com