

## AC Surge Protector SPD I2R-75K DIN-Rail 120/240 Vac 3-Phase Delta (Hi Leg) MOV 75 kA, UL 1449 4th Ed. Type 1 and Type 2, TAA



### I2R-75KH240

#### Features

- UL1449 4th Ed. Type 1/Type 2
- High Capacity MOV Protection
- Visual Suppression Status Indicator
- Dry Contact Remote Annunciation Terminations
- Replaceable Modules I2R-75KR120 (L1, L3), I2R-75KR280 (L,2) and I2R-75KR120 (N-G)
- Wire and Comb Busbar Wiring Terminals
- Reversible Chassis for Top or Bottom Wiring
- DIN-Rail Mount
- No External Backup Fuses Required

#### Applications

- Electrical Panelboards
- Industrial Automation
- Communications Base Stations
- IT & Data Centers
- Switchgear
- Motor Control Centers
- Automatic Transfer Switches
- Wastewater Treatment
- Oil & Gas
- LED Lighting
- Schools
- Hospitals
- Small Cells
- Intelligent Traffic Systems

#### Description

AC surge protector (also known as SPD or lightning protector) I2R-75KH240 from Transtector is a UL1449 4th Ed. Type 1/Type 2 DIN-Rail style SPD that utilizes state of the art MOV technology to protect critical equipment that operates on a 120/240 Vac 3-Phase Delta (Hi Leg) electrical service. This surge protector provides effective protection against electrical transient surges that are generated both by external lightning events and by internal switching events and supports long-term system reliability by safely shunting high amounts of transient energy while maintaining a very low clamping voltage. Transtector AC surge protectors are available in stock with same day shipping.

#### Electrical Specifications

Description	Minimum	Typical	Maximum	Units
Service Voltages		120/240		Vac
Service Type		3-Phase Delta (Hi Leg)		
Frequency	50		60	Hz
Maximum Continuous Operating Voltage (MCOV)				
L - L			350	Vac
L - N			175	Vac
L - G			350	Vac
N - G			175	Vac
H - L			450	Vac
H - N			275	Vac

Click the following link (or enter part number in "SEARCH" on website) to obtain additional part information including price, inventory and certifications: [AC Surge Protector SPD I2R-75K DIN-Rail 120/240 Vac 3-Phase Delta \(Hi Leg\) MOV 75 kA, UL 1449 4th Ed. Type 1 and Type 2, TAA I2R-75KH240](#)

AC Surge Protector SPD I2R-75K DIN-Rail 120/240 Vac 3-Phase Delta  
 (Hi Leg) MOV 75 kA, UL 1449 4th Ed. Type 1 and Type 2, TAA



## I2R-75KH240

H - G	450	Vac
-------	-----	-----

### Surge Protection Specification

Description	Minimum	Typical	Maximum	Units
Surge Protection Technology		MOV		
Protection Modes		L-G		
8/20 $\mu$ s Surge Current			75	kA
Nominal Discharge Current Rating (In)		10		kA
VPR 8/20 $\mu$ s				
L - L			1,200	Vpk
L - N			600	Vpk
L - G			1,200	Vpk
N - G			600	Vpk
H - L			1,500	Vpk
H - N			800	Vpk
H - G			1,500	Vpk
Response Time			25	ns
SCCR (Short Circuit Current Rating)		200		kAIC

### Mechanical Specifications

#### Size

Height	2.76 in	[70.1 mm]
Width	4 in	[101.6 mm]
Depth	2.76 in	[70.1 mm]
Weight	1.15 lbs	[521.63 g]
Housing Material and Plating	PA66 CT1; V-0	

### Environmental Specifications

Temperature Range (Operational)	-40 to +85 deg C
Temperature Range (Storage)	-40 to +85 deg C
Environmental Protection Rating	IP 20
Humidity	95% non-condensing

Click the following link (or enter part number in "SEARCH" on website) to obtain additional part information including price, inventory and certifications:  
[AC Surge Protector SPD I2R-75K DIN-Rail 120/240 Vac 3-Phase Delta \(Hi Leg\) MOV 75 kA, UL 1449 4th Ed. Type 1 and Type 2, TAA I2R-75KH240](#)

AC Surge Protector SPD I2R-75K DIN-Rail 120/240 Vac 3-Phase Delta  
(Hi Leg) MOV 75 kA, UL 1449 4th Ed. Type 1 and Type 2, TAA



## I2R-75KH240

### Installation

Mount Type	DIN Rail
Service Wiring Terminal	Compression Lug #4 to #14 AWG
Status Indication Terminal	3-Position Screw Terminal #16 to #22 AWG

### Compliance Certifications

UL Compliant	Yes
TAA Compliant	Yes
Certifications	UL 1449 4th Ed. Type 1 and Type 2

Transtector Systems specializes in protection of highly sensitive, low voltage equipment through its patented, non-degrading silicon diode technology and custom filters. Our power quality expertise translates into a diverse product offering including AC, DC, and signal applications as well as integrated cabinets, power distribution panels and EMP hardened devices.

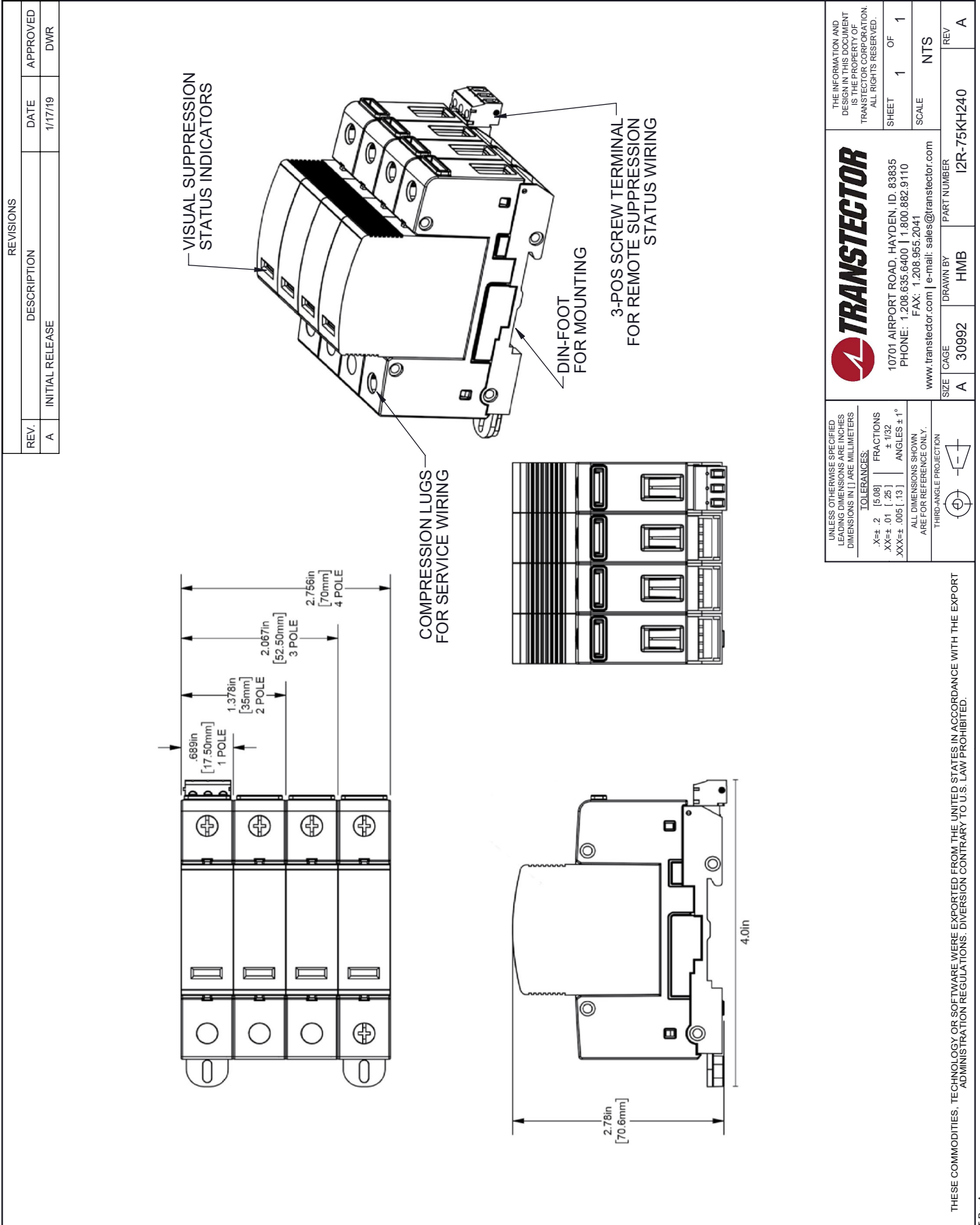
Click the following link (or enter part number in "SEARCH" on website) to obtain additional part information including price, inventory and certifications: [AC Surge Protector SPD I2R-75K DIN-Rail 120/240 Vac 3-Phase Delta \(Hi Leg\) MOV 75 kA, UL 1449 4th Ed. Type 1 and Type 2, TAA I2R-75KH240](#)

URL: <https://www.transtector.com/ac-surge-protector-spd-i2r-75k-din-i2r-75kh240-p.aspx>

The information contained in this document is accurate to the best of our knowledge and representative of the part described herein. It may be necessary to make modifications to the part and/or the documentation of the part, in order to implement improvements. Transtector reserves the right to make such changes as required. Unless otherwise stated, all specifications are nominal. Transtector does not make any representation or warranty regarding the suitability of the part described herein for any particular purpose, and Transtector does not assume any liability arising out of the use of any part or documentation.

AC Surge Protector SPD I2R-75K DIN-Rail 120/240 Vac 3-Phase Delta (Hi Leg) MOV 75 kA, UL 1449 4th Ed. Type 1 and Type 2, TAA

I2R-75KH240 CAD Drawing



**TRANSTECTOR**  
 10701 AIRPORT ROAD, HAYDEN, ID. 83835  
 PHONE: 1.208.635.6400 | 1.800.882.9110  
 FAX: 1.208.955.2041  
 www.transvector.com | e-mail: sales@transvector.com

THE INFORMATION AND DESIGN IN THIS DOCUMENT IS THE PROPERTY OF TRANSTECTOR CORPORATION. ALL RIGHTS RESERVED.  
 SHEET 1 OF 1  
 SCALE NTS  
 SIZE CAGE A 30992  
 DRAWN BY HMB  
 PART NUMBER I2R-75KH240  
 REV A