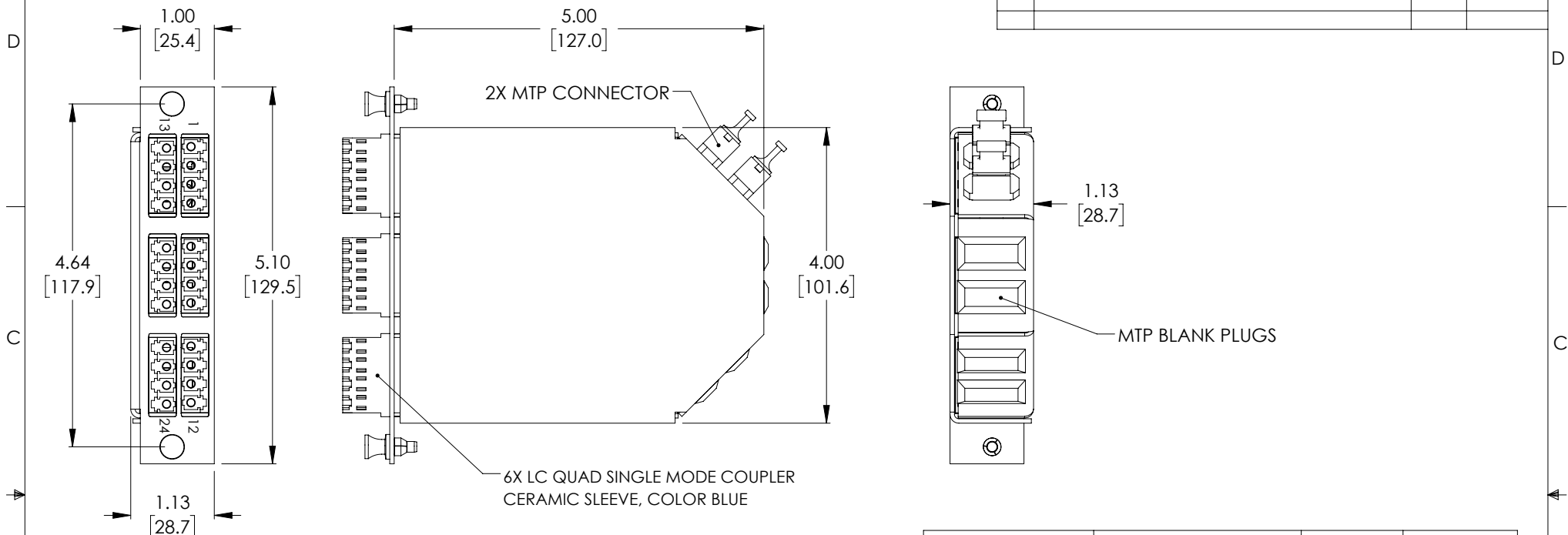
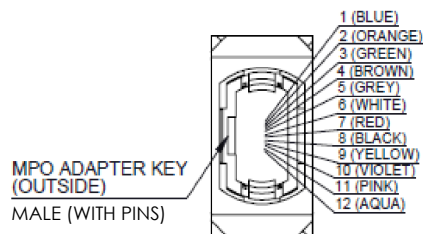


THE INFORMATION CONTAINED IN THIS DRAWING IS THE SOLE PROPERTY OF L-COM, INC. ANY REPRODUCTION IN PART OR WHOLE WITHOUT THE WRITTEN PERMISSION OF L-COM, INC. IS PROHIBITED.

| REVISIONS | | | |
|-----------|-----------------|------------|-----------|
| REV | DESCRIPTION | DATE | APPROVED |
| A | INITIAL RELEASE | 12/17/2020 | PHOSPODAR |
| | | | |
| | | | |



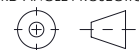
| FANOUT TABLE | | | | | |
|--------------|----|--------|------|----|--|
| MTP | LC | COLOR | MTP | LC | |
| 1-1 | 1 | BLUE | 2-1 | 13 | |
| 1-2 | 2 | ORANGE | 2-2 | 14 | |
| 1-3 | 3 | GREEN | 2-3 | 15 | |
| 1-4 | 4 | BROWN | 2-4 | 16 | |
| 1-5 | 5 | GREY | 2-5 | 17 | |
| 1-6 | 6 | WHITE | 2-6 | 18 | |
| 1-7 | 7 | RED | 2-7 | 19 | |
| 1-8 | 8 | BLACK | 2-8 | 20 | |
| 1-9 | 9 | YELLOW | 2-9 | 21 | |
| 1-10 | 10 | VIOLET | 2-10 | 22 | |
| 1-11 | 11 | PINK | 2-11 | 23 | |
| 1-12 | 12 | AQUA | 2-12 | 24 | |



| PART NUMBER | DESCRIPTION | FIBER TYPE | LC ADAPTER COLOR |
|------------------|--|-----------------|------------------|
| FSP-MTM2-LCQ6-SM | MTP Male 24 Fiber to 6 Quad LC 24 Port SMF | SMF OS1 9/125μm | BLUE |

| MPO | | LC/UPC | |
|----------------|-------------|----------------|-------------|
| INSERTION LOSS | RETURN LOSS | INSERTION LOSS | RETURN LOSS |
| ≤0.7dB | ≥45dB | ≤0.30dB | ≥50dB |

- NOTES:
1. GUARANTEED VALUE ON IL AND RL AS WHOLE MODULE.
 2. DIMENSIONS ARE IN MILLIMETER.
 3. ALL DIMENSIONS ARE FOR REFERENCE ONLY.
 4. COUPLERS SHALL BE SHIPPED WITH DUST CAPS INSTALLED. (NOT SHOWN)
 5. COMPONENT SHALL BE INDIVIDUALLY PACKAGED IN ACCORDANCE WITH L-COM SPECIFICATION PS-0031.

| | | | | | | | | | |
|---|--|--|--|--|--------------------|--|-----------|---|--|
| UNLESS OTHERWISE SPECIFIED, DIMENSIONS ARE IN INCHES [mm] | | APPROVALS | | DATE | | <div>L-com™ an INFINITI® brand</div> | | 50 High Street, West Mill, North Andover, MA 01845 USA. Phone: 1.800.341.5266 1.978.682.6936 | |
| OVERALL CABLE LENGTH TOLERANCE: ≤12 [305] = +1 [25] / -0 >12 [305] ≤60 [1524] = +2 [51] / -0 >60 [1524] ≤120 [3048] = +4 [102] / -0 >120 [3048] ≤300 [7620] = +6 [152] / -0 >300 [7620] = +5% / -0 | | DRAWN BY DZINN | | 12/17/2020 | | CATEGORY | | FIBER OPTICS | |
| | | CHECKED BY DFRISIELLO | | 12/17/2020 | | | | | |
| | | APPROVED BY PHOSPODAR | | 12/17/2020 | | | | | |
| ALL OTHER DIMENSIONAL TOLERANCES: .X = ± .2 [5] FRACTIONS .XX = ± .02 [.5] ± 1/32 .XXX = ± .005 [.13] ANGLES ± 1° | | CONFIGURATION DETAILS OF UNDIMENSIONED FEATURES MAY VARY | | PRODUCT DESCRIPTION 2 MTP Male (24 fiber) to 6 Quad LC connectors, LGX Fan-out cassette, single mode | | | | | |
| THIRD-ANGLE PROJECTION  | | COLOR VARIATIONS MAY OCCUR | | SIZE A | CAGE CODE 43321 | ITEM NO. FSP-MTM2-LCQ6-SM | REV. A | | |
| | | | | SCALE: NONE | | CAD FILE: FSP-MTM2-LCQ6-SM.SLDDRW | | SHEET 1 OF 1 | |