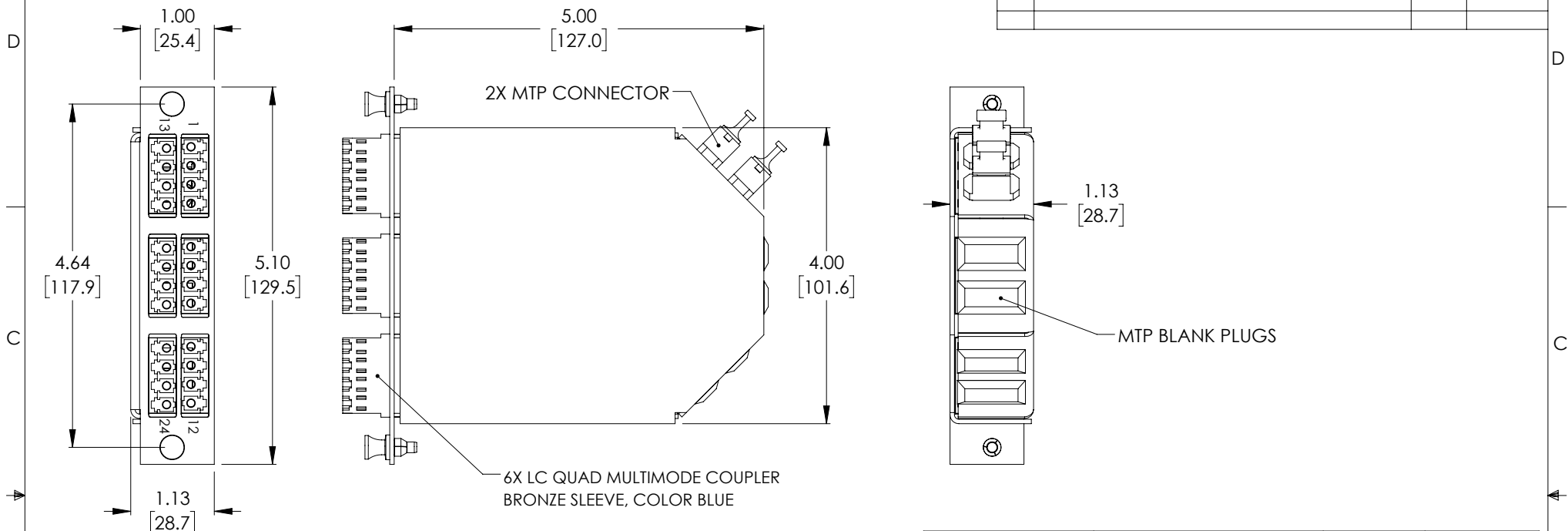
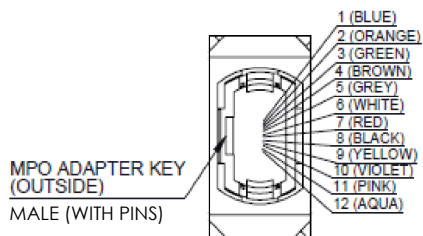


THE INFORMATION CONTAINED IN THIS DRAWING IS THE SOLE PROPERTY OF L-COM, INC. ANY REPRODUCTION IN PART OR WHOLE WITHOUT THE WRITTEN PERMISSION OF L-COM, INC. IS PROHIBITED.

REVISIONS			
REV	DESCRIPTION	DATE	APPROVED
A	INITIAL RELEASE	12/17/2020	PHOSPODAR





FANOUT TABLE					
MTP	LC	COLOR	MTP	LC	
1-1	1	BLUE	2-1	13	
1-2	2	ORANGE	2-2	14	
1-3	3	GREEN	2-3	15	
1-4	4	BROWN	2-4	16	
1-5	5	GREY	2-5	17	
1-6	6	WHITE	2-6	18	
1-7	7	RED	2-7	19	
1-8	8	BLACK	2-8	20	
1-9	9	YELLOW	2-9	21	
1-10	10	VIOLET	2-10	22	
1-11	11	PINK	2-11	23	
1-12	12	AQUA	2-12	24	



PART NUMBER	DESCRIPTION	FIBER TYPE	LC ADAPTER COLOR
FSP-MTM2-LCQ6-M3	MTP Male 24 Fiber to 6 Quad LC 24 Port MMF OM3	MMF OM3 50/125µm	AQUA

MPO		LC/UPC	
INSERTION LOSS	RETURN LOSS	INSERTION LOSS	RETURN LOSS
≤0.5dB	≥20dB	≤0.30dB	≥25dB

- NOTES:
1. GUARANTEED VALUE ON IL AND RL AS WHOLE MODULE.
  2. DIMENSIONS ARE IN MILLIMETER.
  3. ALL DIMENSIONS ARE FOR REFERENCE ONLY.
  4. COUPLERS SHALL BE SHIPPED WITH DUST CAPS INSTALLED. (NOT SHOWN)
  5. COMPONENT SHALL BE INDIVIDUALLY PACKAGED IN ACCORDANCE WITH L-COM SPECIFICATION PS-0031.

UNLESS OTHERWISE SPECIFIED, DIMENSIONS ARE IN INCHES [mm]		APPROVALS		DATE		 an INFINITI® brand		50 High Street, West Mill, North Andover, MA 01845 USA. Phone: 1.800.341.5266 1.978.682.6936	
OVERALL CABLE LENGTH TOLERANCE: ≤12 [305] = +1 [25] / -0 >12 [305] ≤60 [1524] = +2 [51] / -0 >60 [1524] ≤120 [3048] = +4 [102] / -0 >120 [3048] ≤300 [7620] = +6 [152] / -0 >300 [7620] = +5% / -0		DRAWN BY DZINN		12/17/2020					
		CHECKED BY DFRISIELLO		12/17/2020					
		APPROVED BY PHOSPODAR		12/17/2020					
ALL OTHER DIMENSIONAL TOLERANCES: .X = ± .2 [5] .XX = ± .02 [.5] .XXX = ± .005 [.13]		CONFIGURATION DETAILS OF UNDIMENSIONED FEATURES MAY VARY		PRODUCT DESCRIPTION 2 MTP Male (24 fiber) to 6 Quad LC connectors, LGX Fan-out cassette, OM3 multimode		FIBER OPTICS			
THIRD-ANGLE PROJECTION 		COLOR VARIATIONS MAY OCCUR		SIZE <b>A</b>	CAGE CODE <b>43321</b>	ITEM NO. <b>FSP-MTM2-LCQ6-M3</b>	REV. <b>A</b>		
				SCALE: NONE		CAD FILE: FSP-MTM2-LCQ6-M3.SLDDRW		SHEET 1 OF 1	