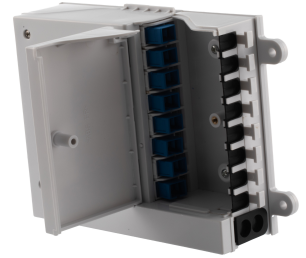


Splitter Distribution Box 8 Ports with 8 SC/UPC SM Simplex Adapter and 1:8 SC/UPC PLC Splitter

ECFDB-108B-P8SC



Features

- Cable Management Tray designed to securely and safely hold your fiber strands
- 8 SC/UPC simplex couplers & 1x8 terminated SC/UPC splitter included
- ABS Plastic indoor wall mount
- Cable in/out ports: 2 inlet, 8 outlet

Applications

- FTTH access networks
- Data communication networks
- Large-scale enterprise networks
- High-demand data centers
- University campus networks
- CATV networks
- Local area networks (LAN)

Description

Introducing the ShowMeCables ECFDB-108B-P8SC Splitter Distribution Box, meticulously crafted to optimize indoor fiber optic connectivity. Constructed from durable ABS Plastic and specifically engineered for wall mounting, this fiber distribution box presents a dependable solution tailored for indoor installations. Boasting 8 fiber ports, including 2 inlet, 8 outlets, it seamlessly facilitates connectivity across your fiber optic infrastructure.

With pre-equipped SC/UPC simplex couplers and a 1x8 terminated SC/UPC splitter, the ECFDB-108B-P8SC supports single-mode fiber optic connections with utmost precision. Its cable management tray ensures the secure organization of fiber strands, effectively minimizing damage risks and maximizing network efficiency. Included with the box are 8 SC/UPC simplex couplers and a 1x8 terminated SC/UPC splitter, simplifying installation procedures and enhancing overall convenience.

Elevate your indoor fiber optic setup with the ShowMeCables ECFDB-108B-P8SC, guaranteeing dependable performance and hassle-free connectivity. Its robust ABS Plastic construction, coupled with the inclusive components, solidifies its status as a reliable choice for indoor fiber optic distribution requirements. Ensure the smooth operation and efficient management of your fiber optic network with this versatile and meticulously designed fiber optic enclosure.

Configuration

Number of Ports Connector 1	16
-----------------------------	----

Mechanical Specifications

Size

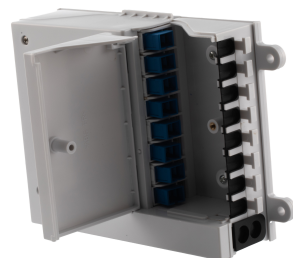
Outer Height	9.1 in	[231.14 mm]
Outer Width	6 in	[152.4 mm]
Outer Depth	9.1 in	[231.14 mm]
Weight	1.5 lbs	[680.39 g]
Enclosure Material	ABS Plastic	

Environmental Specifications

Operating Temperature	-10 to 70 deg C
-----------------------	-----------------

Splitter Distribution Box 8 Ports with 8 SC/UPC SM Simplex Adapter and 1:8 SC/UPC PLC Splitter

ECFDB-108B-P8SC



FPO Show Me Cables specializes in protection of highly sensitive, low voltage equipment through its patented, non-degrading silicon diode technology and custom filters. Our power quality expertise translates into a diverse product offering including AC, DC, and signal applications as well as integrated cabinets, power distribution panels and EMP hardened devices.

FPO Click the following link (or enter part number in "SEARCH" on website) to obtain additional part information including price, inventory and certifications: [Splitter Distribution Box 8 Ports with 8 SC/UPC SM Simplex Adapter and 1:8 SC/UPC PLC Splitter ECFDB-108B-P8SC](#)

FPO The information contained within this document is accurate to the best of our knowledge and representative of the part described herein. It may be necessary to make modifications to the part and/or the documentation of the part in order to implement improvements. Show Me Cables reserves the right to make such changes as required. Unless otherwise stated, all specifications are nominal. Show Me Cables does not make any representation or warranty regarding the suitability of the part described herein for any particular purpose, and Show Me Cables does not assume liability arising out of the use of any part or document.

Splitter Distribution Box 8 Ports with 8 SC/UPC SM Simplex Adapter and 1:8 SC/UPC PLC Splitter

