

Passive CWDM, Single LGX Demux, 4 Ch. w/ 20nm spacing, start ch 1550nm, LC/UPC w/ MON (1%)&Pass Single com fiber



CWD-04355-00461L

Features

- Passive
- CWDM
- 20nm spacing
- Standard LGX cassette
- Single Fiber Demux
- 4 Channels
- Starting with channel 1551nm
- LC/UPC connectors
- 1% Monitor option
- Pass / Express option

Applications

- Single Mode Fiber Networking
- Single Fiber
- Demux function
- Metro transport
- Regional Distribution
- Inside Plant (ISP) Operation

Description

The CWD-04355-00461L is a CWDM Passive Filter with 4 CWDM Channels. The CWD-04355-00461L is a single HU LGX cassette filter with Demux functionality. The CWD-04355-00461L has 4 channels: 1551, 1571, 1591, and 1611nm, starting with 1551nm and with 20nm spacing. The CWD-04355-00461L has LC/UPC connectors and has Monitor port option and a PASS port to carry the unused CWDM channels through. The CWD-04355-00461L is a single fiber filter for demuxing channels received COM signal. produces the high quality passive filters that your business can rely on. With products continually in stock and same-day shipping, our expert technical support and knowledgeable sales team can get you to the right parts for the job.

Configuration

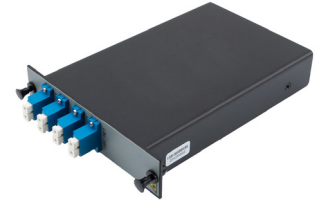
Connector Type	LC/UPC
Number of Channels	4
Module Function	Demux
Filter Type	CWDM

Filter Specifications

Description	Minimum	Typical	Maximum	Units
Operating Wavelength	1260		1635	nm
Pass Port Wavelength	1271		1611	nm
Pass Port Insertion Loss			1.8	dB
Pass Port Isolation	12			dB
Pass Band	6.5			nm
Pass Band Ripple			0.5	dB
Center Wavelength (Channel)	1551		1611	nm
Channel Spacing		20		nm
Channel Insertion Loss			2	dB
Return Loss	45			dB
Directivity			50	dB
PDL			0.25	dB
PMD			0.2	PS
Power Handling			300	mW

Click the following link (or enter part number in "SEARCH" on website) to obtain additional part information including price, inventory and certifications:
[Passive CWDM, Single LGX Demux, 4 Ch. w/ 20nm spacing, start ch 1550nm, LC/UPC w/ MON \(1%\)&Pass Single com fiber](#)

Passive CWDM, Single LGX Demux, 4 Ch. w/ 20nm spacing, start ch 1550nm, LC/UPC w/ MON (1%)&Pass Single com fiber



Channel to Monitor Port IL	25	dB
COM to Monitor Port IL	23	dB
IL Thermal Stability	0.005	dB/degC
Wavelength Thermal Stability	0.002	nm/degC

Environmental Specifications

Temperature

Operating Range -20 to +65 deg C

Storage Range -40 to +85 deg C

Humidity 5-98 %RH

Compliance Certifications (see [product page](#) for current document)

Plotted and Other Data

Notes:

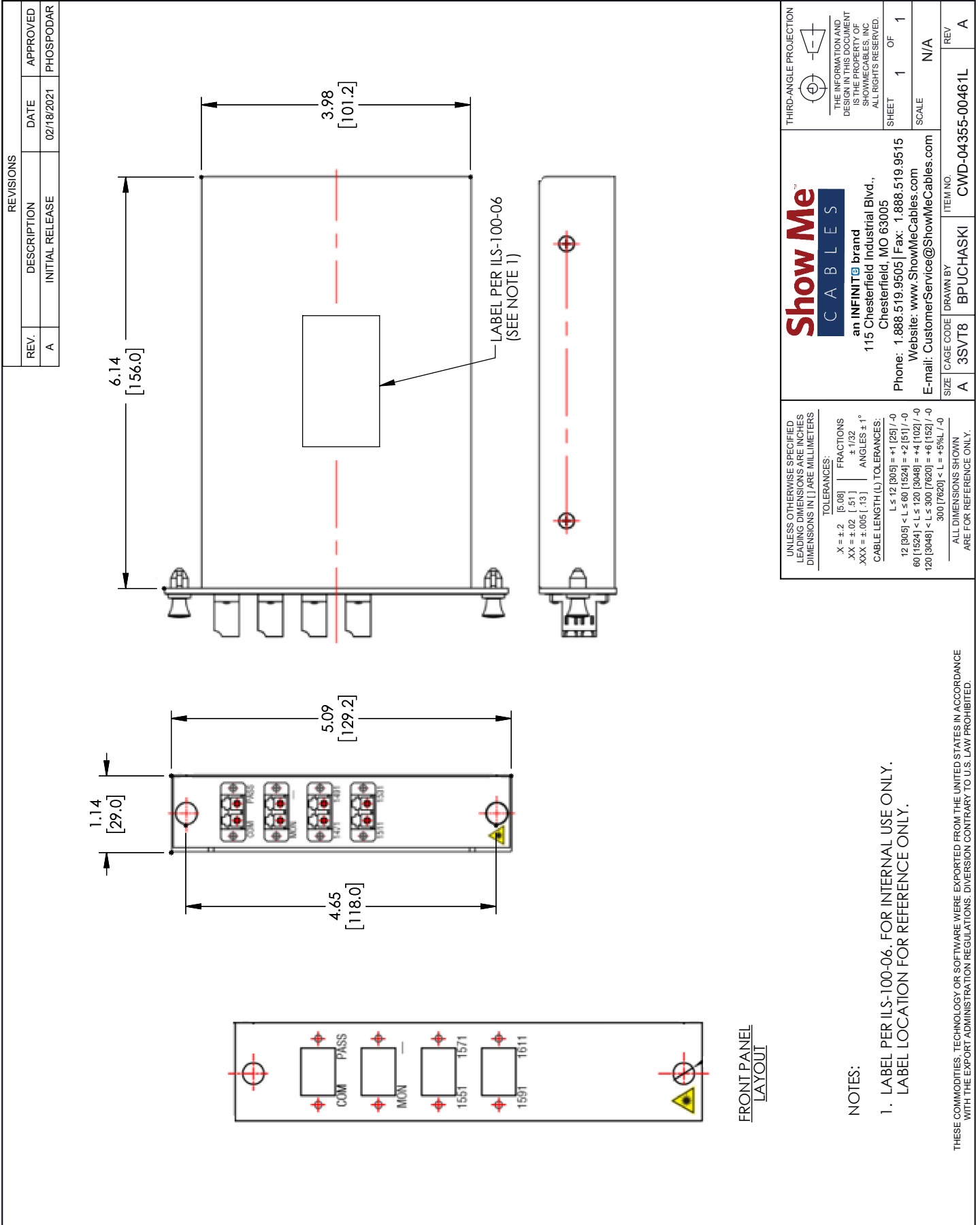
Passive CWDM, Single LGX Demux, 4 Ch. w/ 20nm spacing, start ch 1550nm, LC/UPC w/ MON (1%)&Pass Single com fiber from Show Me Cables has same day shipment for domestic and International orders. Click the following link (or enter part number in "SEARCH" on website) to obtain additional part information including price, inventory and certifications.

URL: <https://www.showmecables.com/passive-cwdm-single-lgx-demux-4-ch-w-20nm-spacing-start-ch-1550nm-lc-upc-w-mon-1-pass-single-com-fiber-pcw1d-04355-nn46-p.aspx>

The information contained within this document is accurate to the best of our knowledge and representative of the part described herein. It may be necessary to make modifications to the part and/or the documentation of the part in order to implement improvements. Show Me Cables reserves the right to make such changes as required. Unless otherwise stated, all specifications are nominal. Show Me Cables does not make any representation or warranty regarding the suitability of the part described herein for any particular purpose, and Show Me Cables does not assume liability arising out of the use of any part or document.

Passive CWDM, Single LGX Demux, 4 Ch. w/ 20nm spacing, start ch 1550nm, LC/UPC w/ MON (1%)&Pass Single com fiber

CWD-04355-00461L CAD Drawing



REVISIONS			
REV.	DESCRIPTION	DATE	APPROVED
A	INITIAL RELEASE	02/18/2021	PHOSPODAR

Show Me CABLES
an INFINITE brand
115 Chesterfield Industrial Blvd.,
Chesterfield, MO 63005
Phone: 1.888.519.9505 | Fax: 1.888.519.9515
Website: www.ShowMeCables.com
E-mail: CustomerService@ShowMeCables.com

THIRD-ANGLE PROJECTION

THE INFORMATION AND DESIGN IN THIS DOCUMENT IS THE PROPERTY OF SHOWMECABLES, INC. ALL RIGHTS RESERVED.

SHEET 1 OF 1

SCALE N/A

UNLESS OTHERWISE SPECIFIED LEADING DIMENSIONS ARE INCHES DIMENSIONS IN [] ARE MILLIMETERS

TOLERANCES:
X ± .2 [5.08] FRACTIONS
XX ± .02 [51] ± 1/32
XXX ± .005 [13] ANGLES ± 1°

CABLE LENGTH (L) TOLERANCES:
L ≤ 12 [305] = +1 [25] / -0
12 [305] < L ≤ 60 [1524] = +2 [51] / -0
60 [1524] < L ≤ 120 [3048] = +4 [102] / -0
120 [3048] < L ≤ 300 [7620] = +6 [152] / -0
300 [7620] < L = +5% / -0

ALL DIMENSIONS SHOWN ARE FOR REFERENCE ONLY.

SIZE CAGE CODE DRAWN BY ITEM NO.
A 3SVT8 BPUCHASKI CWD-04355-00461L

- NOTES:
- LABEL PER ILS-100-06. FOR INTERNAL USE ONLY. LABEL LOCATION FOR REFERENCE ONLY.

THESE COMMODITIES, TECHNOLOGY OR SOFTWARE WERE EXPORTED FROM THE UNITED STATES IN ACCORDANCE WITH THE EXPORT ADMINISTRATION REGULATIONS. DIVERSION CONTRARY TO U.S. LAW PROHIBITED.