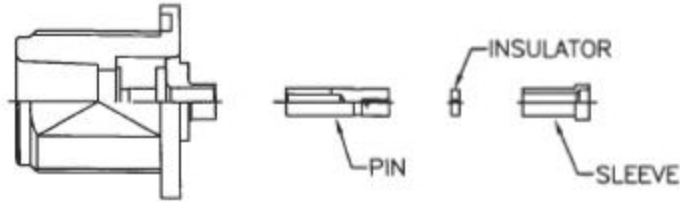


# Show Me

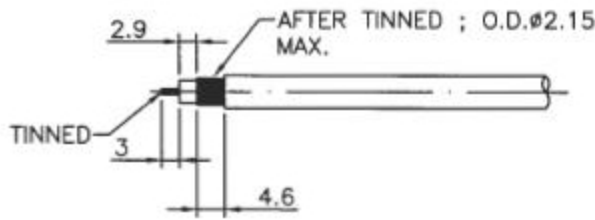
## CABLES

cables & connectors since 1995

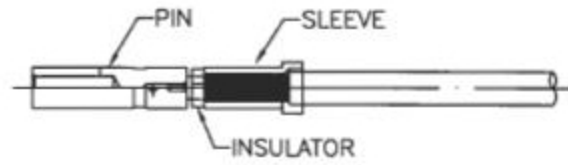
STEP 1. ALL PARTS OF THE CONNECTOR ARE SHOWN.



STEP 2. STRIP THE CABLE INNER CONDUCTOR, DIELECTRIC, BRAID, AND JACKET AS SHOWN.



STEP 3. SLIDE THE SLEEVE ONTO CABLE. INSERT INNER CONDUCTOR INTO THE CONTACT PIN AND SOLDER IT.



STEP 4. SLIDE THE PIN INTO BODY AND CRIMP

