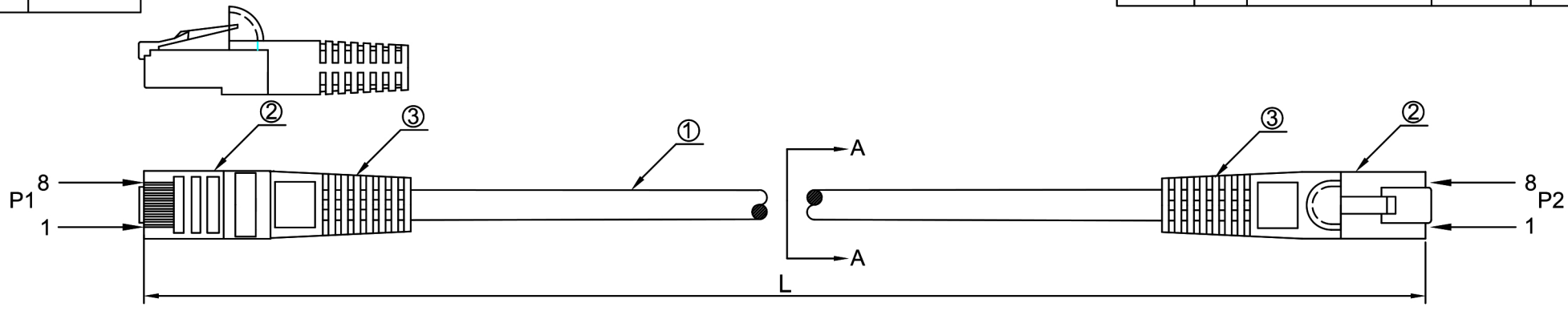
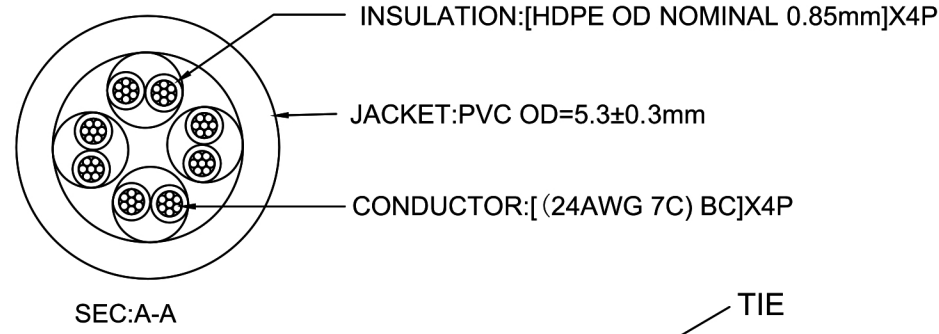


DATE	REV.	REVISION	DRAFTING	CHECKED
2018. 4. 19	A0	NEW	LM	YB



INK MARKIN: PATCH CABLE www.ecorecables.com 866-519-9505 CAT5E UTP 350MHz ETL VERIFIED TO ANSI/TIA-568-C.2 ▲
 4PR/24AWG CMX(UL) c(UL) CMH E164469-XX RoHS COMPLIANTMPLIANT

COLOR
Red
Orange
Yellow

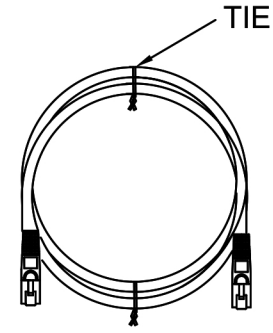


orange 1	green 2
white/orange	white/green
blue 3	brown 4
white/blue	white/brown

PINOUT(T568B+T568A)		
P1	WIRE	P2
1	WHITE/ORANGE	3
2	ORANGE	6
3	WHITE/GREEN	1
4	BLUE	4
5	WHITE/BLUE	5
6	GREEN	2
7	WHITE/BROWN	7
8	BROWN	8

L (mm)	T(mm)	L (mm)	T(mm)
305	±30	4270	±50
910	±30	7620	±80
1524	±30	15240	±200
2130	±30	30480	±300
3050	±30		

Winding	
L(mm)	Tie(pcs)
305	Without Winding
910	1
1524-30480	2



③	MOLD	YUS-07 PVC	2
②	PLUG	8P8C G/F RJ45	2
①	CABLE	CAT.5E UTP 24AWG*4P PVC	1
No.	TITLE	DESCRIPTION	Q' TY

Unless specified on the drawing, tolerances are per the follows:
 X. ±0.20 X° ±3
 .X ±0.10 .X° ±0.3
 .XX ±0.05

DRAW. NO	GF-WS180128	TITLE	Cat5e Crossover Patch Cable	
CUSTOMER		Part No.	590-XX	
CUST' R P/N		CHECK	DATE	
SCALE		APPROVED	SHEET	
UNIT	mm			

Material	Part Number	Note	<input checked="" type="checkbox"/> RoHS	<input type="checkbox"/> Reach	<input type="checkbox"/> GP	<input type="checkbox"/> HF	<input type="checkbox"/> Other	Department		
1	2	3	4	5	6	7	8	9	10	11