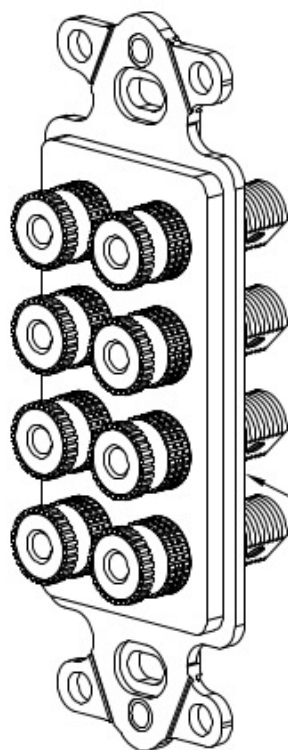


## 8 Binding Post Decorex Insert

PRODUCT SPECIFICATION



8 Binding Post Decorex Insert

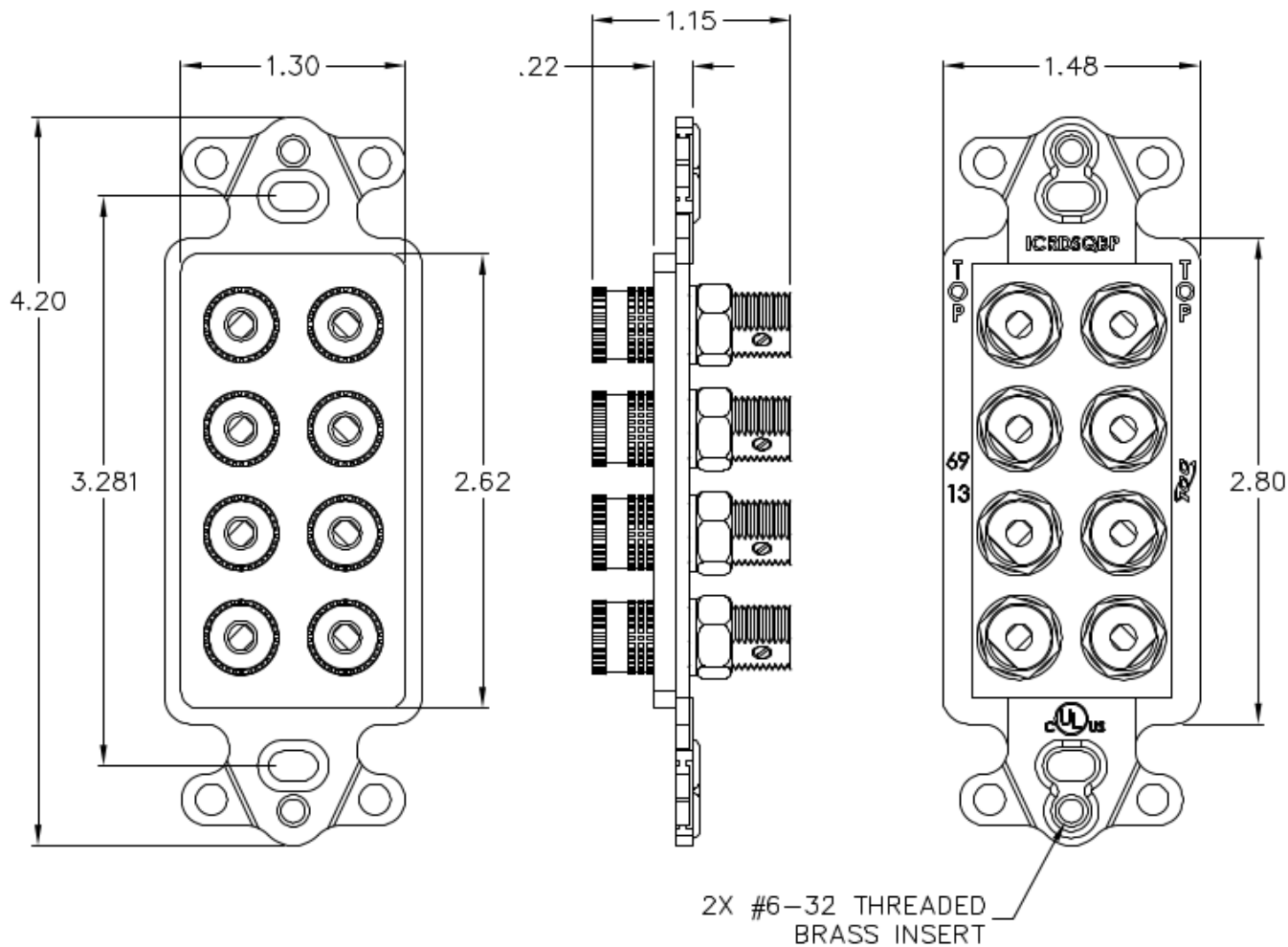
### Package includes:

- A. 8 Binding Post Decorex Insert, 1 pc
- B. #6-32 x 3/4" Pan Head Machine Screw, 2 pcs

---

### Features and Benefits:

- Gold plating for optimum connection quality and exceptional performance
- Binding posts accept up to 8 AWG multi-stranded audio wire or banana plugs to allow ample current flow to high wattage speakers providing superior fidelity sound
- Easy installation with a set-screw connection for incoming up to 8 AWG audio cable on the rear side
- Angled front and rear wire inserts for easy speaker wire termination
- Supplied with red and black bands for easy polarity identification
- Supports 5.1 to 7.1 surround sound audio systems
- Fits standard NEMA electrical boxes
- Provides a professional finished look
- Compatible with all IC107 Decorex faceplates
- Available in almond, ivory, and white
- UL listed



**NOTE: UNLESS OTHERWISE SPECIFIED**

**1. HOUSING:**

- A. MATERIAL: ABS, UL 94V-0
- B. FINISH: GLOSSY
- C. COLOR: XX: AL-ALMOND, IV-IVORY, & WH-WHITE

**2. BINDING POST:**

- A. MATERIAL: BRASS WITH 3 MICRON GOLD PLATING
- B. POLARITY BAND COLOR: 4 BLACK, 4 RED