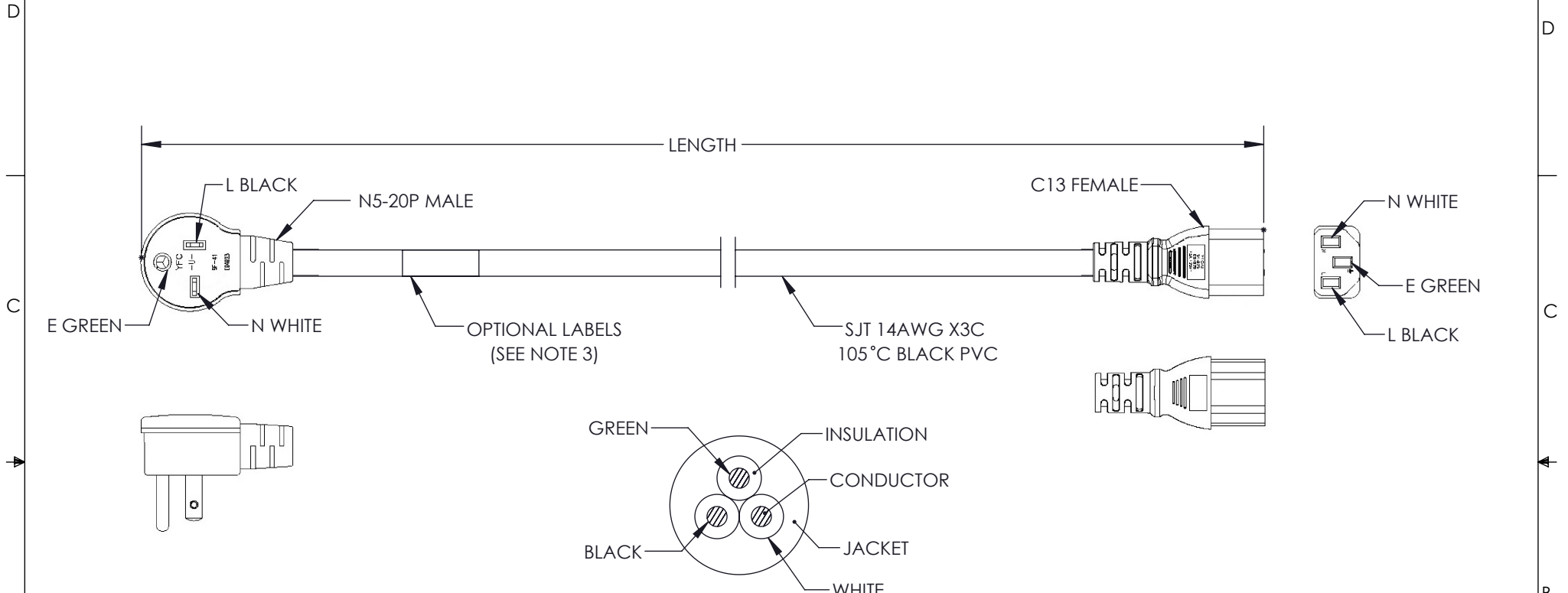


THE INFORMATION CONTAINED IN THIS DRAWING IS THE SOLE PROPERTY OF SHOW ME CABLES, INC. ANY REPRODUCTION IN PART OR WHOLE WITHOUT THE WRITTEN PERMISSION OF SHOW ME CABLES, INC. IS PROHIBITED.


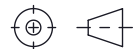
REVISIONS			
REV	DESCRIPTION	DATE	APPROVED
A	INITIAL RELEASE	10/19/2021	GUTTADAURO



ITEM NUMBER	LENGTH INCHES [MM]
44-234-15-003	36.0 ± 0.4 [910 ± 10.0]
44-234-15-006	72.0 ± 0.8 [1830 ± 20.0]
44-234-15-010	120.0 ± 1.2 [3050 ± 30.0]

NOTES:

- VOLTAGE RATING:**
DIELECTRIC VOLTAGE WITHSTAND TEST: 1500V / 1 Sec
CONDUCTOR RESISTANCE ≤ 8.88Ω/1000M
VOLTAGE RATING AC 300V
- CABLE MARKING :**
(UL) E135710-F5 SJT 3X14AWG 105°C 300V VW-1
CSA LL95737 SJT3X2.08mm²(14AWG) FT2 YFC-BONEAGLE
- OPTIONAL LABELS:**
OPTIONAL LABEL(S) MAY INCLUDE
UL, CURRENT AND/OR WARNING
- CABLE ASSEMBLY SHALL BE INDIVIDUALLY PACKAGED.**
- ALL DIMENSIONS FOR REFERENCE ONLY.**

UNLESS OTHERWISE SPECIFIED, DIMENSIONS ARE IN INCHES [mm] OVERALL CABLE LENGTH TOLERANCE: ≤12 [305] = +1 [25] / -0 >12 [305] ≤60 [1524] = +2 [51] / -0 >60 [1524] ≤120 [3048] = +4 [102] / -0 >120 [3048] ≤300 [7620] = +6 [152] / -0 >300 [7620] = +5% / -0 ALL OTHER DIMENSIONAL TOLERANCES: .X = ± .2 [5] FRACTIONS ± 1/32 .XX = ± .02 [.5] ANGLES ± 1° .XXX = ± .005 [.13]	APPROVALS	DATE	 115 Chesterfield Industrial Blvd., Chesterfield, MO 63005 Phone: 1.888.519.9505 Fax: 1.888.519.9515
	DRAWN BY MVEERAPPAN CHECKED BY DFRISIELLO APPROVED BY GUTTADAURO	10/19/2021 10/19/2021 10/19/2021	
THIRD-ANGLE PROJECTION 	CONFIGURATION DETAILS OF UNDIMENSIONED FEATURES MAY VARY COLOR VARIATIONS MAY OCCUR	PRODUCT DESCRIPTION N5-20P - C13 Power Cord, 15A, 125V	SIZE A
SCALE: NONE		CAGE CODE 3SVT8	ITEM NO. 44-234-XXX
SHEET 1 OF 1		CAD FILE: 44-234-XXX.SLDDRW	