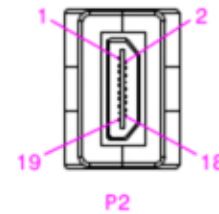
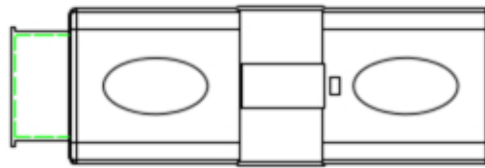
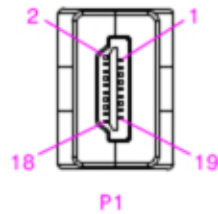


Show Me

CABLES

cables & connectors since 1995



Electrical Test:

- 1.100% Open & Short & Mis Wire Test
- 2.Contact Resistance: 2 Ohm(Max)
- 3.Insulation Resistance: 10M Ohm(Min)
- 4.Hi-Pot Test: DC 300V/10ms



Pin Assignment

P1	P2	P1	P2
1 _____ 1	13 _____ 13		
2 _____ 2	14 _____ 14		
3 _____ 3	15 _____ 15		
4 _____ 4	16 _____ 16		
5 _____ 5	17 _____ 17		
6 _____ 6	18 _____ 18		
7 _____ 7	19 _____ 19		
8 _____ 8			
9 _____ 9			
10 _____ 10			
11 _____ 11			
12 _____ 12			
Shell _____			Shell _____

Materials Specifications

No	Qty	Desc	Material	Notes
1	1	Cable 1	TC	30AWG.
2	19	Cable 2	TC	30AWG.
3	1	HDMI F Up	ABS	Black Insulation
4	1	HDMI F Down	ABS	Black Insulation
5	1	HDMI F Side Up	ABS	Black Insulation
6	1	HDMI F Side Down	ABS	Black Insulation
7	2	Shield		Solder Type.Gold Plated. PCBL5.
8	1	Dust Cover		Transparent



SCALE

1:1

UNITS

mm

Show Me Cables

Right Angle 180° Adjustable
HDMI Adapter, M-F

528-002

ED

2009-11-19

SHEET NO 1/1